

# Skirting boards

Flexibility meets design



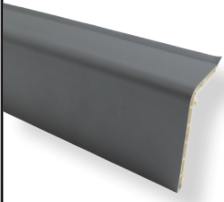
## ☑ Skirting board system - flexibility meets design

HERZ skirting boards are a practical and elegant solution for renovating old buildings, as well as for new buildings and commercial premises where pipes are to remain accessible above plaster. Unsightly cables can also be concealed with the skirting board. The wide range of colours offers architects and planners many design options. The models of our HERZ skirtings are available in the colours light oak, white ash, beech, birch, white RAL 9016 and concrete grey.

Due to the precise matching of the individual system components and accessories, an easy and quick installation is made possible. The ingenious design of the accessories opens up a high degree of flexibility for the user in virtually all structural conditions, whether residential or commercial buildings. There are butt connectors, external and internal corners (also pluggable), end covers as well as pipe and skirting board holders to match the skirting boards.



## ☑ Plastic skirting board system

Model	Colour	Length	Order number	VKE (m)
 <p><b>HERZ-Sockelleiste, 2000 x 40 x 88 mm</b> aus regeneriertem PVC-Hohlkammerprofil mit lichtechter Folie beschichtet, Dichtlippe in Sockelleistenfarbe anextrudiert, Click-Clack-Schnappbefestigung an den Leistenhaltern. Verkaufseinheit 10 Stück (je 2 m).</p>	<b>Concrete grey</b>	2 lfm <sup>1)</sup>	3 S970 80	20
	<b>Beech</b>	2 lfm <sup>1)</sup>	3 S970 20	20
	<b>Light oak</b>	2 lfm	3 S970 30	20
	<b>White ash</b>	2 lfm <sup>1)</sup>	3 S910 31	20
	<b>White RAL9016</b>	2 lfm	3 S970 59	20
	<b>Maple/Birch</b>	2 lfm	3 S970 51	20

<sup>1)</sup> Skirting boards with a length of 2.5 running metres on request.

## ☑ Benefits

- ☑ System components coordinated with each other
- ☑ Easy and quick assembly
- ☑ Various designs and colours
- ☑ Produced in the EU

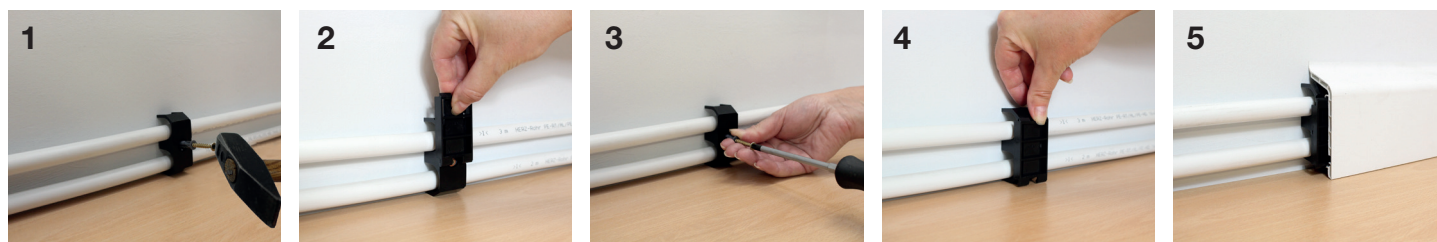




### ☑ Easy and quick to assemble Click-clack system

There is a Click-Clack sliding bracket on the strip holders which is intended for mounting pipes for two-pipe or one-pipe heating systems up to a pipe diameter of 22 mm pipe diameter, either height-adjustable (up to 15 mm, 3 **S940 00**) or not height-adjustable (3 **S912 00**). The installation is very simple and after removing any existing skirting boards, the heating pipes are fixed to the wall with the base part of the Click-Clack slide holder placed on the floor. The pipe and skirting board holders are available in black or white and must be fixed using a nail plug 3 **S130 60** 6 x 60 mm.



### ☑ Mounting with sliding holder 3 S940 00



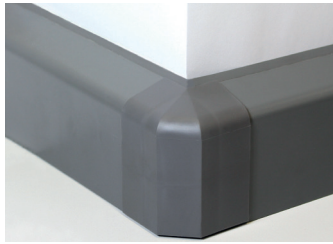
### ☑ Mounting with Fix tube holder 3 S912 00



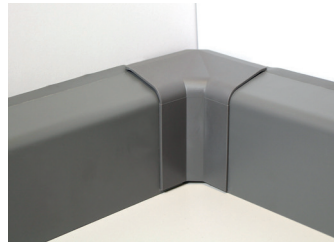
### ☑ Pipe and skirting board holder

 <p><b>HERZ pipe holder fixed up to Pipe diameter 22 mm, white</b></p>	<p>For fastening or retrofitting HERZ skirting boards to already installed pipes, not height-adjustable. Fastening by means of nail dowels 3 <b>S130 60</b> 6 x 60 mm, requirement 1 piece/m skirting board.</p>	<p>3 <b>S912 00</b></p>
 <p><b>HERZ sliding holder up to tube diameter 22 mm, black</b></p>	<p>For fastening or retrofitting HERZ skirting boards to already installed pipes, height adjustable up to 15 mm. Fastening by means of nail plug 3 <b>S130 60</b> 6 x 60 mm, Requires 1 piece/m skirting board.</p>	<p>3 <b>S940 00</b></p>

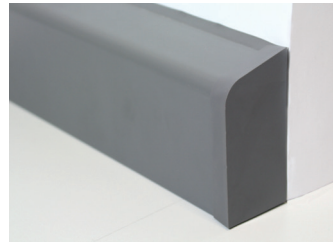
## ☑ A solution for every situation



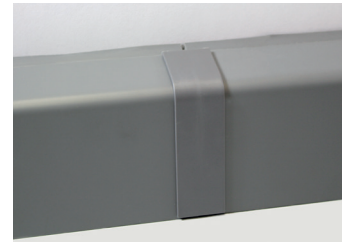
Outside corner pluggable



Plug-in inner corner



End cover right/left



Joint connector

## ☑ Variety in design and colour

In conjunction with the soft special sealing lip integrated towards the wall, an optimal seal to the wall is guaranteed even with small unevennesses. In addition, the extra-long PVC soft lip prevents dirt and moisture from penetrating behind the skirting board. This colour-matching additional sealing lip for wall levelling expands the application possibilities and offers greater flexibility. Available in the colours light oak, white ash, beech, birch, white RAL 9016 and concrete grey. With this diverse colour palette, it is very easy to combine. So you can choose the skirting board that matches your floor.

### ☑ Set the scene

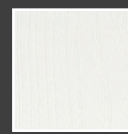
Colour accents in delicate pastels or intense trendy shades offer a wide range of design options.



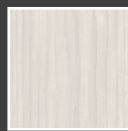
Concrete grey



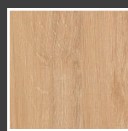
Beech



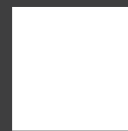
Ash white



Maple/  
Birch



Light oak



White  
RAL 9016

