

HERZ- Connection elements

cone- and flat sealed

Data sheet for **Connection elements and Adapter**, Issue 0815

☑ Technical data:

Max. temperature: 110°C

Max. pressure: PN10

Heating water according ÖNORM H5195 or VDI- Standard 2035.

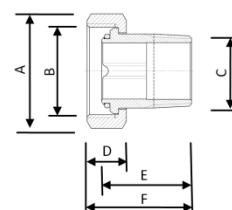
The use of ethylene, or propylene glycol in a mixing ratio 25- 50% is allowed.

The used cone is according standard DIN3838.

Cone sealed elements

1 6209 XX Iron pipe connection with cone 90°, nut and connection element

1 6210 XX Iron pipe connection with cone, nut and connection element



Order number	A	B	C	D	E	F
1 6209 03	SW 46	1 1/4"	1"	17,5	40	46
1 6209 04	SW 60	1 3/4"	1 1/4"	21	47	53
1 6210 00	SW 27	5/8"	3/8"	13	27	30,5
1 6210 21	SW 30	3/4"	1/2"	14	30	35
1 6210 26	SW 30	3/4"	1/2"	14	26	30
1 6210 11	SW 30	3/4"	1/2"	14	35	39
1 6210 02	SW 36	1"	3/4"	16,5	36	39,5
1 6210 12	SW 36	1"	1/2"	16,5	36	39,5

The O-ring works as an additional sealing. In case of malfunction or if it gets lost the iron pipe connection is sealed metallically.

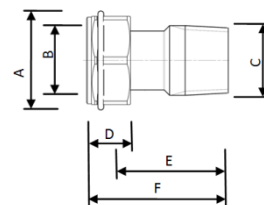
☑ Materials

Nut Brass CW614N, nickel plated

Connection element Brass CW614N, nickel plated

O-Ring EPDM

1 6210 44 Radiator connection,with cone seal, nut and connection element without cover sleeve DELUXE



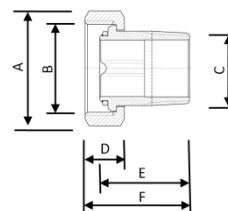
Order number	A	B	C	D	E	F
1 6210 44	SW 27	5/8"	1/2"	13,5	40	43,5

☑ Materials

Nut Brass CW614N, natural

Connection element Brass CW614N, natural

1 6211 00 Radiator connection, for valves 1/2" on radiator sleeve 3/8", with cone, nut and connection element

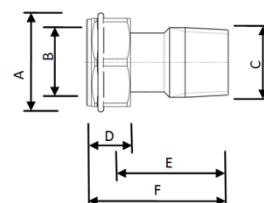


Order number	A	B	C	D	E	F
1 6211 00	SW 30	3/4"	3/8"	14	29	33

Materials

Nut Brass CW614N, nickel plated
 Connection element Brass CW614N, nickel plated
 O-Ring EPDM

1 6213 01 Radiator connection for valves 3/8" on radiator sleeve 1/2", with cone, nut and connection element

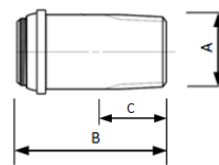
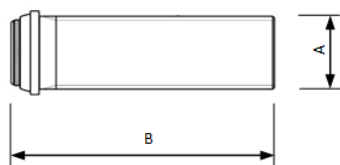


Order number	A	B	C	D	E	F
1 6213 01	SW 27	5/8"	1/2"	14,5	39	40

Materials

Nut Brass CW614N, nickel plated
 Connection element Brass CW614N, nickel plated

1 6218 XX Threaded bush, long, without nut, can be shortened in order to compensate for differences in structural dimensions.



Order number	A	B
1 6218 00	3/8"	40
1 6218 01	1/2"	76
1 6218 02	3/4"	70

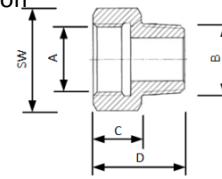
Order number	A	B	C
1 6218 11	1/2"	39	13
1 6218 21	1/2"	42	13
1 6218 31	1/2"	48	13
1 6218 41	1/2"	36	13
1 6218 51	1/2"	76	13

Materials

Threaded nozzle Brass CW614N, nickel plated
 O-Ring EPDM

The O-ring works as an additional sealing. In case of malfunction or if it gets lost the iron pipe connection is sealed metallically.

1 6219 XX Reduction socket, for connection of pipe and valve, brass version
female thread (pipe) x male thread (valve)

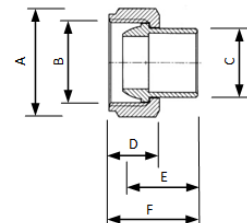


Order number	SW	A	B	C	D
1 6219 03	40	1"	1/2"	18	29
1 6219 04	46	1 1/4"	1/2"	11	31
1 6219 05	40	1"	3/4"	13	31
1 6219 14	46	1 1/4"	3/4"	13	33

Materials

Reduction socket Brass CW614N, natural

1 6235 XX Soldering connection, with cone seal, brass nut
Soldering nipple made of brass

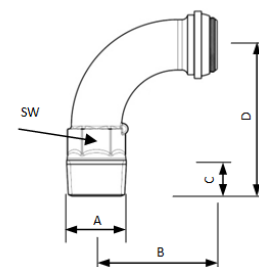


Order number	A	B	C	D	E	F
1 6235 10	SW 27	5/8"	12	13	19	21,5
1 6235 12	SW 36	1"	18	16,5	23,5	29
1 6235 21	SW 30	3/4"	12	14	18,5	20,5
1 6235 31	SW 30	3/4"	15	14	18,5	20,5
1 6235 41	SW 30	3/4"	18	14	15	25

Materials

Nut Brass CW614N, nickel plated
Soldering nipple Brass CW614N, natural

1 6249 XX Iron pipe connection elbow 90°, with cone seal, without nut



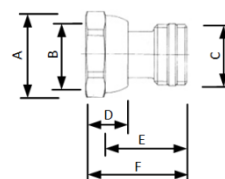
Materials

Elbow Brass CC754S, nickel plated
O-Ring EPDM

The O-ring works as an additional sealing. In case of malfunction or if it gets lost the iron pipe connection is sealed metallically.

Order number	SW	A	B	C	D
1 6249 00	15	3/8"	37	9	40
1 6249 01	18	1/2"	43	11,5	54
1 6249 02	23	3/4"	52	13	60

1 6252 01 Radiator connection with PTFE ring, freely moving nut, self sealing

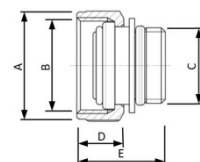


Order number	A	B	C	D	E	F
1 6252 11	SW 27	M22x1,5	1/2"	15	24	34

Materials

Nut Brass CW614N, nickel plated
 Connection element Brass CW614N, nickel plated

1 6252 11 Radiator connection with freely moving nut G3/4" and O-ring seal

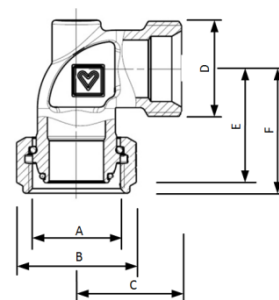


Order number	A	B	C	D	E
1 6252 11	SW 30	3/4"	1/2"	14	25

Materials

Nut Brass CW614N, nickel plated
 Connection element Brass CW614N, nickel plated
 O-Ring EPDM

1 6248 XX Connection elbow 90°, pipe connection with male thread, freely moving nut and cone seal



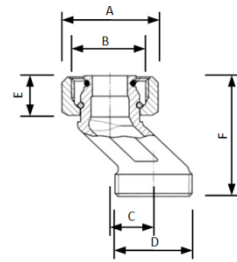
Order number	A	B	C	D	E	F
1 6248 16	M22x1,5	SW 25	26	M22x1,5	30	32
1 6248 01	3/4"	SW 30	29	3/4"	32	34

Materials

Nut Brass CW614N, nickel plated
 Elbow Brass CC752S, nickel plated
 O-Ring EPDM

The O-ring works as an additional sealing. In case of malfunction or if it gets lost the iron pipe connection is sealed metallically.

1 3004 XX Compensation adapter, set of 2 pieces, to balance different pipe connections, radius 15mm, valve connection 3/4" with cone seal, freely moving nut, pipe connection 3/4" male thread



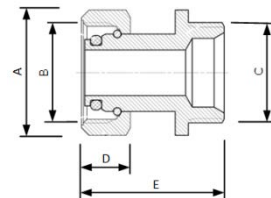
Order number	A	B	C	D	E	F
1 3004 15	SW 30	3/4"	15	3/4"	13	41

Materials

Nut Brass CW614N, nickel plated
 Elbow Brassg CC754S, nickel plated
 O-ring EPDM

The O-ring works as an additional sealing. In case of malfunction or if it gets lost the iron pipe connection is sealed metallically.

1 3011 02 Screw connection with cone and freely moving nut
 1 3011 03 G3/4"
 1 6223 22



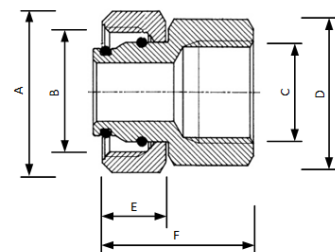
Order number	A	B	C	D	E
1 3011 02	SW 30	3/4"	3/4"	13	28
1 3011 03	SW 30	3/4"	3/4"	13	37
1 6223 22	SW 30	3/4"	M22x1,5	13	28

Materials

Nut Brass CW614N, nickel plated
 Screw connection Brass CW614N, nickel plated
 O-ring EPDM

The O-ring works as an additional sealing. In case of malfunction or if it gets lost the iron pipe connection is sealed metallically.

1 6223 01 Threaded pipe connection with freely moving nut
 1 6220 73



Best.Nr.	A	B	C	D	E	F
1 6223 01	SW 30	3/4"	1/2"	SW 27	13	33
1 6220 73	SW 38	1"	1"	SW 38	16	29

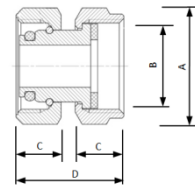
Materials

Nut Brass CW614N, nickel plated
 Screw connection Brass CW614N, nickel plated
 O-ring EPDM

The O-ring works as an additional sealing. In case of malfunction or if it gets lost the iron pipe connection is sealed metallically.

1 6220 71 Screw connections, with cone seal G3/4" and flat seal G3/4"

Order number	A	B	C	D
1 6220 71	SW 30	3/4"	13	42



Materials

Nut	Brass CW614N, nickel plated
Screw connection	Brass CW614N, nickel plated
O-ring	EPDM
Flat sealing	Klinger SIL- C4400

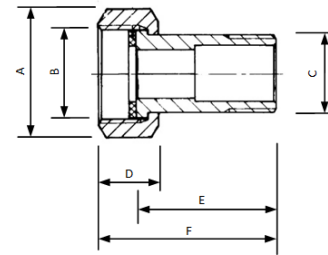
The O-ring works as an additional sealing. In case of malfunction or if it gets lost the iron pipe connection is sealed metallically.

Flat sealed elements

1 6220 XX Iron pipe connection with flat seal, with nut and seal
 1 6221 XX

Materials

Nut Brass CW614N, nickel plated
 Connection element Brass CW614N, nickel plated
 Flat sealing Klinger SIL- C4400

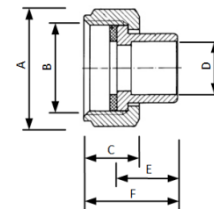


Order number	A	B	C	D	E	F
1 6220 00	SW 27	5/8"	3/8"	13	24	32
1 6220 20	SW 25	1/2"	3/8"	13,5	24	32
1 6220 21	SW 30	3/4"	1/2"	14	25	34
1 6220 12	SW 36	1"	3/4"	16,5	31	41
1 6220 64	SW 52	1 1/2"	1 1/4"	22	40	53
1 6220 74	SW 65	2"	1 1/2"	22	49	62
1 6220 75	SW 75	2 1/4"	1 1/2"	23	49	63
1 6220 76	SW 96	2 3/4"	2"	26	56	73
1 6220 11	SW 30	3/4"	1/2"	14	38	47
1 6220 22	SW 36	1"	3/4"	16,5	44	55,5
1 6220 63	SW 46	1 1/4"	1"	17,5	35	46
1 6220 65	SW 60	1 3/4"	1 1/2"	23	49	63,5
1 6220 66	SW 75	2 3/8"	2"	22,5	56	69
1 6221 02	SW 36	1"	1/2"	16,5	32,5	43,5

1 6236 XX Soldering connection with flat seal

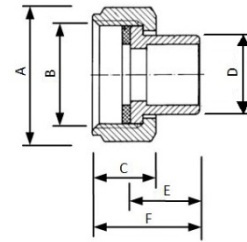
Materials

Nut Brass CW614N, nickel plated
 Soldering connection Brass CW614N, natural
 Flat sealing Klinger SIL- C4400



Order number	A	B	C	D	E	F
1 6236 00	SW 25	1/2"	13,5	12	15	25
1 6236 01	SW 30	3/4"	14	12	14	23
1 6236 11	SW 30	3/4"	14	15	17	26
1 6236 02	SW 36	1"	16,5	15	18	29
1 6236 21	SW 30	3/4"	14	18	19	28
1 6236 12	SW 36	1"	16,5	18	19	30
1 6236 22	SW 36	1"	16,5	22	23	34
1 6236 63	SW 46	1 1/4"	17,5	28	24	35
1 6236 74	SW 65	2"	22	35	27	40,5
1 6236 64	SW 52	1 1/2"	22	35	27	41
1 6236 75	SW 75	2 1/4"	23	42	31	45,5
1 6236 65	SW 60	1 3/4"	23	42	31	45
1 6236 76	SW 96	2 3/4"	26	54	37	55
1 6236 66	SW 75	2 3/8"	23	54	37	55

1 6240 XX Welding connection with flat seal
 1 6241 XX

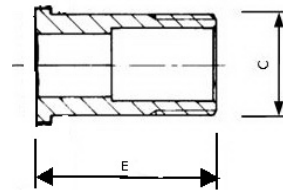


Materials

Nut Brass CW614N, nickel plated
 Welding connection Steel 1.0576
 Flat sealing Klinger SIL- C4400

Order number	A	B	C	D	E	F
1 6240 01	SW 30	3/4"	14	21,3	45	54
1 6240 02	SW 36	1"	16,5	26,8	45	56
1 6240 63	SW 46	1 1/4"	17,5	33,7	51	62
1 6240 64	SW 52	1 1/2"	22	41,0	54	68
1 6240 65	SW 60	1 3/4"	23	47,5	57	71,5
1 6240 66	SW 75	2 3/8"	22,5	60,3	60	71,5
1 6241 02	SW 36	1"	16,5	21,3	45	56

1 6220 XX Threaded flat seat

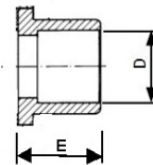


Order number	C	E
1 6220 51	1/2"	25
1 6220 52	3/4"	31
1 6220 53	1"	35
1 6220 54	1 1/4"	40
1 6220 55	1 1/2"	49
1 6220 56	2"	56

Materials

Threaded flat seat Brass CW614N, nickel plated

1 6236 XX Solder flat seat

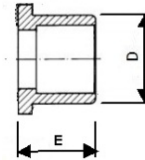


Order number	D	E
1 6236 50	12	14
1 6236 51	15	17
1 6236 52	18	19
1 6236 53	22	23
1 6236 54	28	24
1 6236 55	35	27
1 6236 56	42	31
1 6236 57	54	37

Materials

Solder flat seat Brass CW614N, natural

1 6240 XX Welding connection, flat sealing



Order number	D	E
1 6240 50	17,2	45
1 6240 51	21,3	45
1 6240 52	26,9	45
1 6240 53	33,7	51
1 6240 54	42,4	54
1 6240 55	48,3	57
1 6241 56	60,3	60

 **Materials**

Welding connections Steel 1.0576

All specifications and statements within this brochure are according to information available at the time of printing and meant for informational purpose only. Herz Armaturen reserves the right to modify and change products as well as its technical specifications and/or its functioning according to technological progress and requirements. It is understood that all images of Herz products are symbolic representations and therefore may visually differ from the actual product. Colours may differ due to printing technology used. In case of any further questions don't hesitate to contact your closest HERZ Branch-office.