

HERZ-thermostatic head

1 7230 22 Radiator thermostat with hydrosensor (liquid filled)

Set value range locked at 10 - 22°C.
White hand wheel.

Model

7230 SP22

Set value range 10 - 22°C

The HERZ-thermostat is maintenance-free.

Operational data

Can be combined with any HERZ-valve suitable for thermostatic operation.

Further information on article numbers, dimensions and delivery type can be found in the appropriate data sheets.

Application

The HERZ-thermostat serves as probe and control element. The valve spindle is moved when the volume of the liquid filling of the HERZ-hydrosensor changes.

Operation

reached in the room, allowing temperature (K) deviations according to the installation and system type.

Setting options

Marking	1	2	3	4
°C	10	13	16,5	22

When the heating period ends, open the thermostat by turning anti-clockwise. This prevents dirt adhering on the valve seat.

Summer setting

For theft protection, snap clips 1 9552 03 can be ordered, which can be fastened over the union nut.

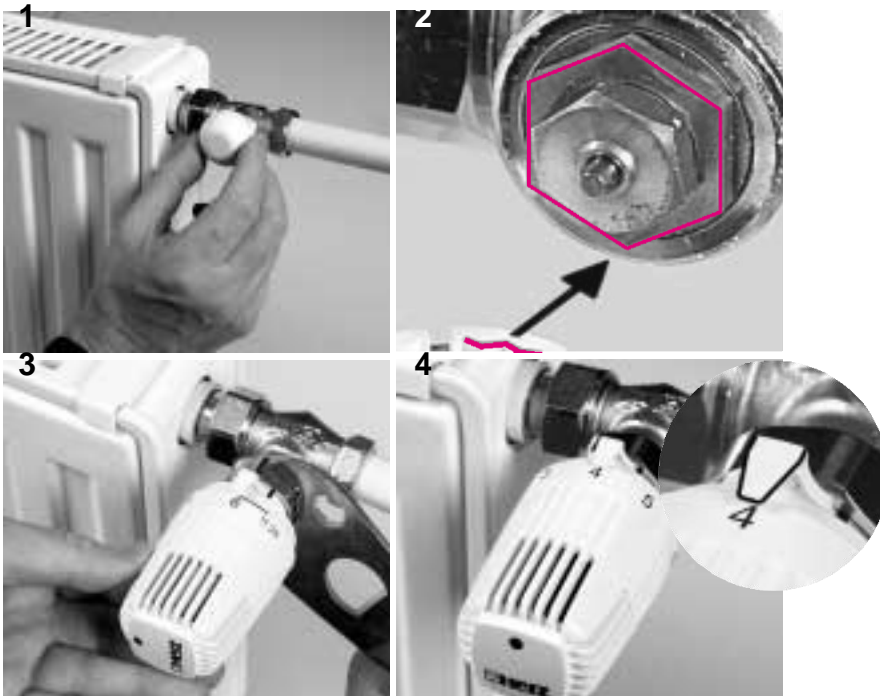
Theft protection

- 1 6640 00 HERZ-universal key to open theft protection
- 1 6807 90 HERZ-TS-90 assembly key
- 1 9551 00 stop pins for limitation and locking of the set value range
- 1 9552 03 theft protection (snap clips), open with key 1 6640 00
- 1 7000 00 Logo clip, unmarked

Accessories

1. Unscrew the screw cap or hand wheel from the valve.
2. Set the thermostatic head to the "fully open" position (preset) and place it on the lower part of the valve until the lower part locks and the indicator is completely visible.
3. Nip up the union nut and tighten gently (key 30 hex).
4. Turn the hand wheel to check operation.

Installation



The HERZ-thermostatic head should not be subjected to direct sunlight or heat radiating devices (e.g. TV). The thermostatic heads can only sense and adjust correctly if the air ways to the integrated sensor are clear and not affected by anything covering the thermostatic head or the whole radiator e.g. if the radiator is covered by panelling or heavy curtains, heat will accumulate and the thermostat is therefore unable to sense and adjust to the room temperature. In this case use HERZ-thermostat with remote sensor or remote setting.

Assembly

- 7330** HERZ-thermostat with remote adjustment
- 7430** HERZ-thermostat with remote sensor and "0" position
- 7460** HERZ-thermostat with remote sensor and automatic frost protection

The appropriate standard sheets provide further technical information about these three products.

