

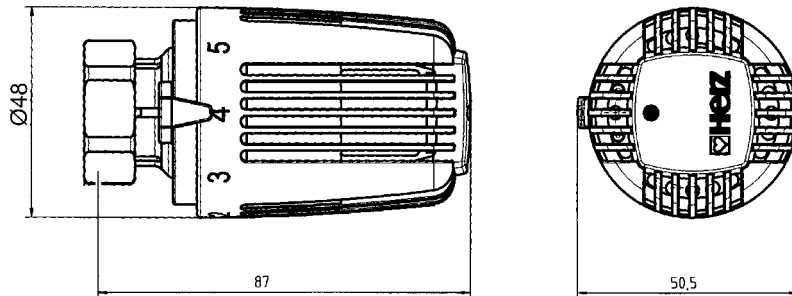
# HERZ THERMOSTAT

Thermostatic head for maximum flow

Data sheet for

**1 7262 00**

Issue 0618



HERZ Thermostatic head

**1 7262 00** Radiator thermostat for maximum flow within the proportional range with automatic frost protection, limitation and locking of set value range, white hand wheel

Model

Set value range **7260** 8 - 25 °C  
 Storage/transport temperature  
 Hand wheel in position "max" 55 °C  
 (for maximum 2 hours 57 °C)  
 Hand wheel in position "min" 40 °C

Operational data

Exceeding the permissible temperature range may damage the thermostatic head!

**kv-values** for HERZ valves with thermostatic head 7262

kv-value	DN	0.5 K	1 K	2 K	3 K	P-Band
<b>HERZ TS-90</b>	10	0.23	0.47	0.54	0.59	kv-value
<b>HERZ TS-90</b>	15	0.29	0.59	0.79	0.90	
<b>HERZ TS-90</b>	20	0.32	0.56	0.92	1.23	
<b>HERZ TS-90</b>	25	0.26	0.59	1.31	1.92	
<b>HERZ TS-90E</b>	15	0.35	0.71	1.32	1.57	
<b>HERZ TS-E</b>	15, 20, 25	0.50	1.18	2.25	3.06	
<b>HERZ Calis TS</b>	15.2			2.0	2.0	
<b>HERZ Calis TS E</b>	20	1.6	3.2	3.7	4.0	

The HERZ thermostat is maintenance-free.

For installation on all HERZ valves for thermostatic operation.  
 Especially suitable in combination with HERZ TS E valves for refurbishment and replacement of one pipe central heating systems in multistorey buildings  
 Article numbers, dimensions and delivery standards of HERZ valves are specified in the appropriate data.

Application

The HERZ-thermostat serves as probe and control element. The valve spindle is moved when the volume of the liquid filling of the HERZ-sensor changes.

Operation

Attachable logo clip



Logo-Clip

On request we can deliver the logo clip including your company's logo.

We reserve the right to make modifications in line with progress in engineering

HERZ Armaturen

Richard-Strauss-Straße 22 • A-1230 Wien  
 e-mail: office@herz-armaturen.com • www.herz-armaturen.com



By adjusting the scale marking to the indicator the following approximate temperature values can be reached in the room. However deviations of some grades (K) are possible, depending on installation and system type.

Marking	mins	*	1	2	3	4	5	6 (max)
°C	8	12	14	16	18	20	22	25

The comfort setting "4" corresponds to a room temperature of approximately 20 °C which offers optimum comfort and, energy saving.

In position "\*" the valves opens independently at an ambient temperature of approx. 12 °C is reached. This function prevents the system from freezing.

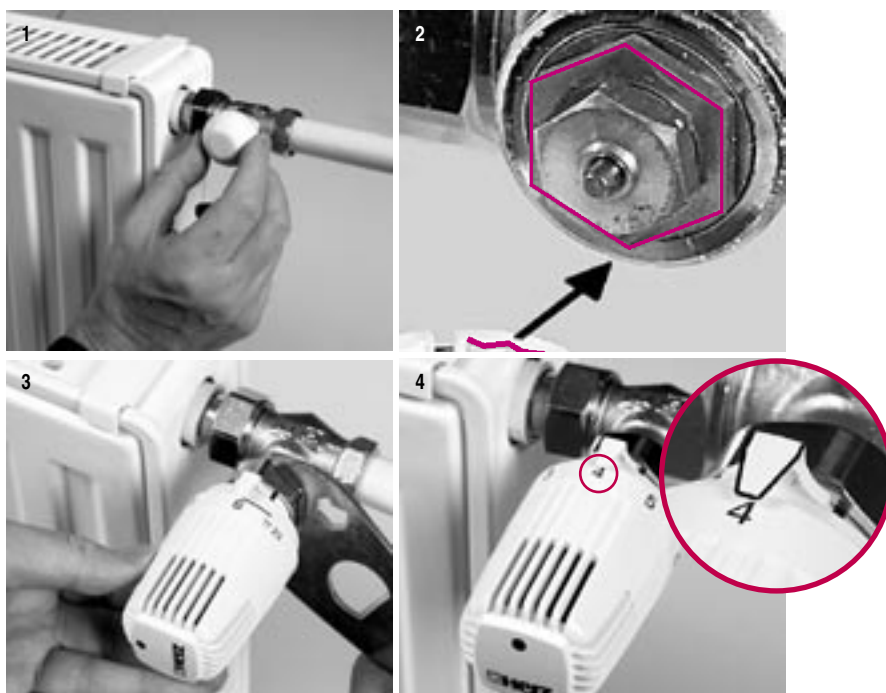
The thermostatic head 7262 is not suitable to shut the valve off. Use cap 1 6329 30 to mechanically shut-off the valve, if required.

When the heating period is ends, open the thermostats by turning anti-clockwise. This prevents dirt particles from adhering to valve seat.

For theft protection, snap clips 1 9552 03 are available, which can be fastened over the union nut.

- 1 6640 00 HERZ Universal key to open the theft protection
- 1 6807 90 HERZ-TS-90 Assembly key
- 1 9551 00 Stop pins for limitation and locking of set value range
- 1 9552 03 Theft protection (snap clips), opened with key 1 6640 00
- 1 7000 00 Logo-clip , unmarked
- 1 6329 30 Shut-off cap
- 1 9102 80 Manual operation
- 1 9553 44 Cover sleeve for fastening nut of thermostatic head

1. Unscrew the screw cap or hand wheel from the valve
2. Set the thermostat to the "fully open" position (pre-set) and place it on the lower part of the valve until the until locks and the indicator is completely visible.
3. Do up the nut and thighten gently (hexagonal key 30).
4. Turn the hand wheel to check operation (e.g. hand wheel is in position 4 - comfort setting).



**Setting options 7262**

**Comfort setting "4"**

**Frost protection \***

**Shut-off**

**Summer setting**

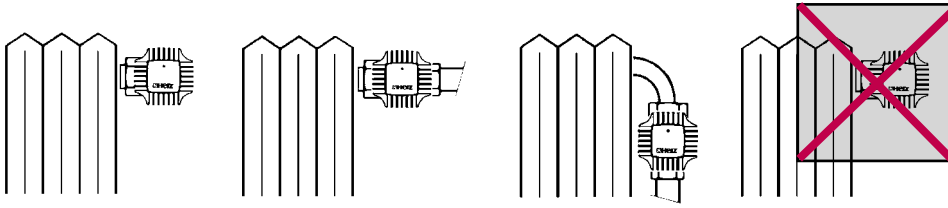
**Theft protection**

**Accessories**

**Installation**

The HERZ-thermostatic head should not be subjected to direct sunlight or heat radiating devices (e.g. TV). The thermostatic heads can only sense and adjust correctly if the air ways to the integrated sensor are clear and not affected by anything covering the thermostatic head or the whole radiator e.g. if the radiator is covered by panelling or heavy curtains, heat will accumulate and the thermostat is therefore unable to sense and adjust to the room temperature. In this case use HERZ-thermostat with remote sensor or remote setting.

## Assembly instructions



## Hidden limitation or locking

Install one or two plug-in type stop pins allows the range of the thermostat to be limited, or locked to prevent unauthorised adjustment outside of this range.

The stop pins are available as accessories, article number 1 **9551 00**

### Procedure

The base on the lower part of the thermostatic head has circular holes to house the stop pins.

- Set the hand wheel of the thermostatic head to the required limiting or locking position.
- Between the hand wheel scale positions "6" and 7 is a line that shows the marking for setting the stop pins. It is advisable to follow the same procedure as for limitation.
- Set hand wheel to required set value (Image 1)
- Upward limitation  
Place pin in alignment to the left-hand end of the line. (Image 2)
- Downward limitation  
Place pin in alignment to the right-hand end of the line. (Image 3)
- Locking  
Place pin at the right and left ends of the line. (Image 4)
- Plug in the stop pins until the stop (thick end). They can be removed with an appropriate tool (pliers etc).



Image 1



Image 2



Image 3



Image 4

All specifications and statements within this brochure are according to information available at the time of printing and meant for informational purpose only. Herz Armaturen reserves the right to modify and change products as well as its technical specifications and/or its functioning according to technological progress and requirements. It is understood that all images of Herz products are symbolic representations and therefore may visually differ from the actual product. Colours may differ due to printing technology used. In case of any further questions don't hesitate to contact your closest HERZ Branch-office.