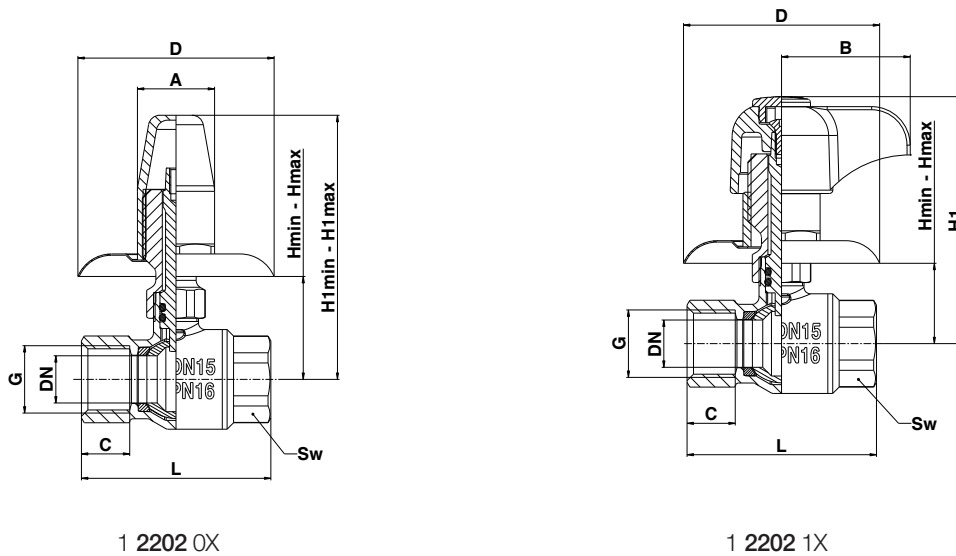


HERZ - Ball valve

for flush mounting

Datasheet 1 2202 XX, Issue 0316

☑ Dimensions



Art.	DN	PN	G [mm]	L [mm]	A [mm]	B [mm]	C [mm]	D [mm]	H _{min} [mm]	H _{max} [mm]	H1 _{min} [mm]	H1 _{max} [mm]	Sw [mm]	Mass [kg]
1 2202 01	15	16	1/2"	59	24	/	15	60	33	48	83	98	25	0,27
1 2202 02	20	16	3/4"	65	24	/	15	60	38	53	88	103	32	0,36
1 2202 11	15	16	1/2"	59	/	40	15	60	25	40	77	/	25	0,33
1 2202 12	20	16	3/4"	65	/	40	15	60	30	45	82	/	32	0,42

☑ Construction

Body:	forged brass acc. to EN 12420, CW617N
Ball:	forged brass acc. to EN 12420, full bore, hard chrome plated, CW617N
Spindle:	turned brass acc. to EN 12164, CW614N
Handle:	Zamak 410 - chrome plated
Connectors:	Female thread acc. ISO 228
Ball seals:	PTFE
Spindle seals:	EPDM 70 ShA

Technical data

Maximum pressure:	PN 16 bar
Maximum temperature:	90°C (short period 110°C)
Operating temperature range:	10°C to +90 °C, (water +0,5 °C to +90 °C)
Maximum short-term temperature range:	+110 °C
Medium:	portable water and heating water

Heating water quality according to ÖNORM H5195 or VDI-Standard 2035. The use of ethylene or propylene glycol in a mixing ratio 25- 50% is allowed. EPDM gaskets can be affected by Mineral oils lubricants and thus lead to failure of the EPDM seals. Please refer to manufacturers documentation when using ethylene glycol products for frost and corrosion protection.

Application

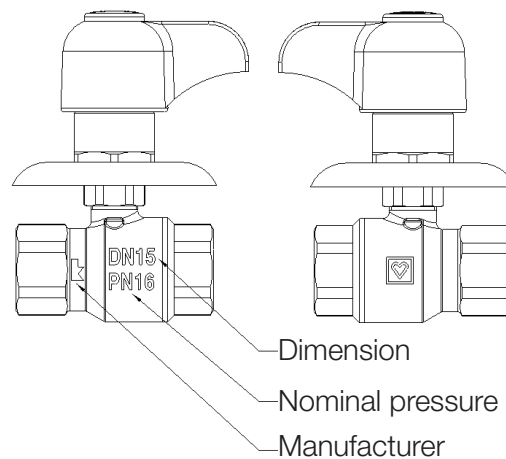
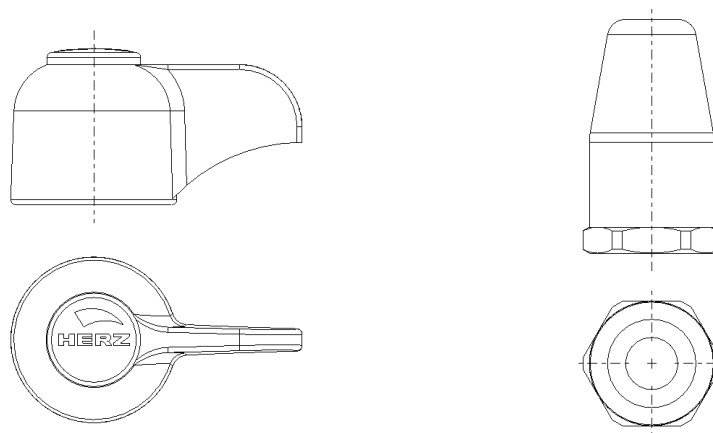
Ball valves are installed as stop valves. Field of application are portable water installations and building services, such as in heating or chilled water plant in buildings. The valve must be used in a fully opened / closed position. In the intermediate positions, the seals can be damaged.

Installation instructions

When assembling, use suitable assembly tool that adapts to valve end connections (Sw, Sw1). Do not exceed the maximum torque moment when assembling the valve. If the valve is used in potable water installation clean processing is required. Please avoid introducing any dirt into the system when installing the valve.

Maintenance

Ball valves do not require any special maintenance. It is recommended to close and open the ball valve at least twice a year.

Labels on ball valves**Handles**

Please note: All specifications and information within this document are reflecting the information available at the time of going to print and meant for informational purpose only. Herz Armaturen reserves the right to modify and change products as well as its technical specifications and/or its function according to technological progress and requirements. All diagrams are indicative in nature and do not to be complete. It is understood that all images of Herz products are symbolic representations and therefore may visually differ from the actual product. Colours may differ due to printing technology used. In case of any further questions don't hesitate to contact your closest HERZ Branch-Office.