

Ball Valve for gas with steel T-handle

Data sheet for
2300
Issue 1107

HTB 650°C, 30 min

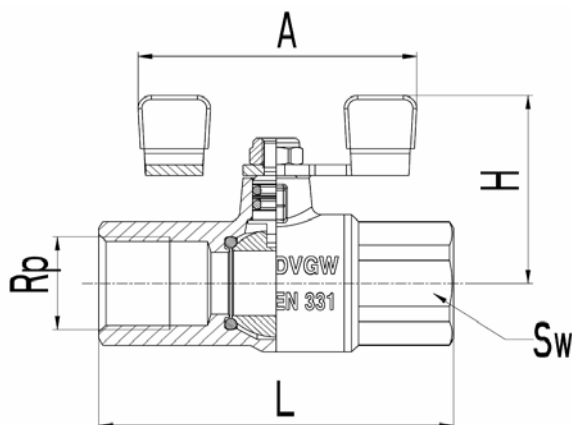
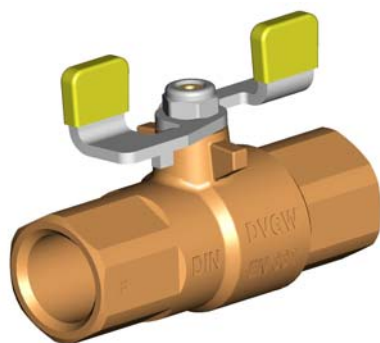


Figure	MOP	PN	DN	Rp	L	H	A	Mt (Nm)	Sw	Dimensions (mm)
1 2300 19	5	1	8	1/4"	55	41	60	20	17	
1 2300 10	5	1	10	3/8"	60	41	60	35	21	
1 2300 11	5	1	15	1/2"	75	43	60	75	26	
1 2300 12	5	1	20	3/4"	80	47	60	100	32	
1 2300 13	5	1	25	1"	90	61	85	125	41	
1 2300 14	5	1	32	1-1/4"	110	66	85	160	50	

Body: forged brass acc. EN 12165

Connection: forged brass

Ball: pressed brass, full bore, machined to a microsmooth finish, chrome plated

Spindle: brass

T-handle: steel with plastic cover

Connections: female thread acc. Rp ISO 7-1 (DIN 2999, BS21)

Sealing elements: NBR 80 ShA ball and NBR 70 ShA spindle

Working pressure: MOP5 (EN331), PN1(HTB 650°C)

Working temperature: -20°C up to 60°C

Suitable for: 1., 2., 3. gas family from EN 437 (gas family acc.DVGW-table G260/I)

Design

Operating data

Application

Ball valve is used in Gas installations according to DVGW-TRGI which use gases acc. to table G260/I as open-closed element. It's used in the central gas heating systems, water heaters in front of the end users. We use it in all places where we expect durability even if we exceed working conditions. In case of fire the valve needs to be closed. By the increased temperature the seals burn away. In that case the seal element is the connection between the ball and the body. By increased temperature of 650 °C the brass itself seals for min. 30 minutes (firemeans min.response time). The ball valve is used as protective element in gas installations.

Use spinning material, Teflon ribbon, sealing paste to seal the connection between the gas installation pipe and ball valve. Screw pipe end into ball valve with suitable assembly tool (Sw) not to exceed the maximum torque moment (Mt). Ball valve must be mounted before fire non resistant elements (heaters, gas meters, rubber hoses, ...). We recommended to use Ball valve in fully open or closed, not in mid position. Ball valve does not need special maintenance. At least twice per year exercise the valve

Instruction for assembling and maintenance

We reserve the right to make modifications in line with progress in engineering.



Kovinsko predelovalno podjetje d.d.
Grmaška c.3, 1275 Šmartno pri Litiji, SLOVENIJA