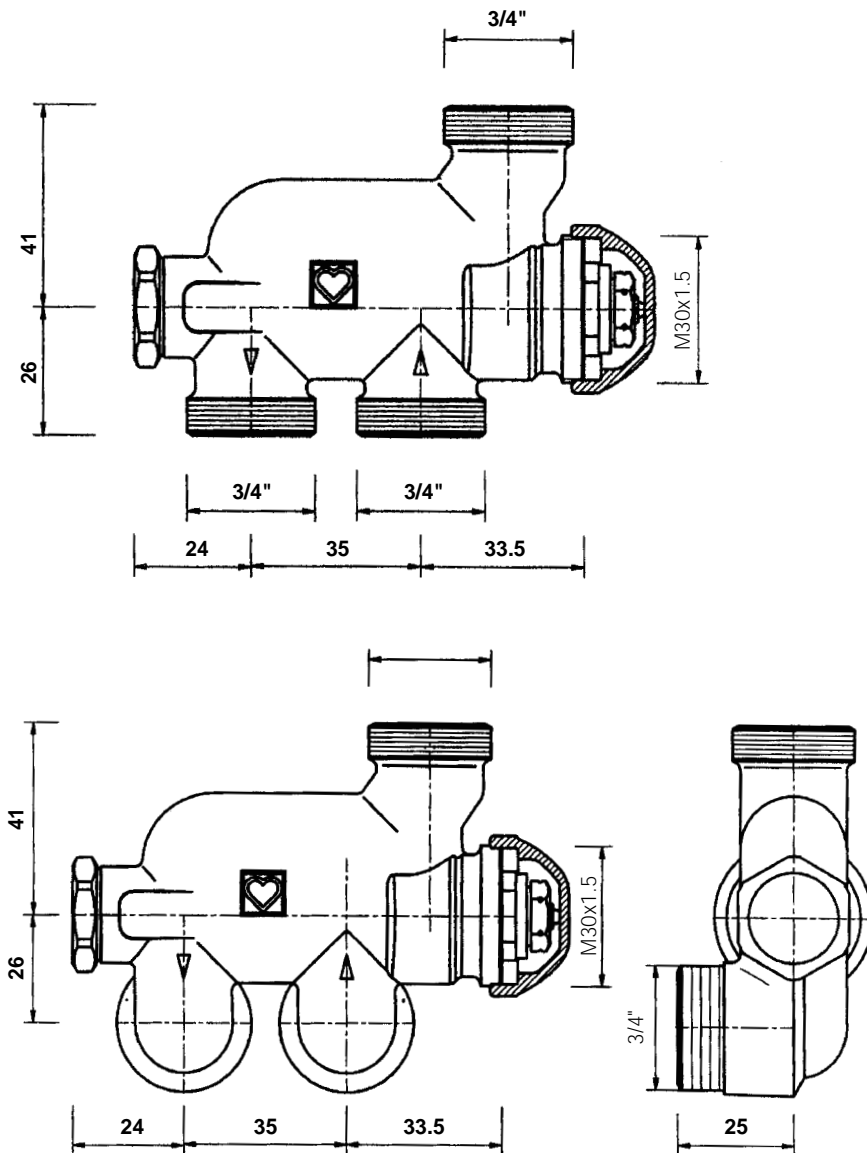


HERZ-4-WA-T35-four-way-valve

Standard sheet for
7765 31, 7765 41
Issue 0902 (0502)



Dimensions in mm

7765 31
Straight model

7765 41
Angle model

Nickel-plated, with screw cap. Pipe connection to be ordered separately. Radiator connection and submerged pipe are not included in package.

1 **7765 31** Straight model

1 **7765 41** Angle model

All models are delivered with screw cap and can be equipped with a HERZ-thermostat. Draining of system is not necessary.

Attention: All HERZ "H" Thermostats fit this valve.

**Model
Article numbers**

The HERZ-4 WA-T35 valve is to be mounted to radiator from centre below or lateral below. Flow direction (arrow direction marked on body) must be obeyed.

Angle models have to be mounted in such a way that thermostatic head can be mounted on the right side of valve axis.

Installation

We reserve the right to make alterations necessitated by technological progress and/or market requirements.

HERZ Armaturen

Richard-Strauss-Straße 22 • A-1230 Wien
e-mail: office@herz-armaturen.com • www.herz-armaturen.com



Maximum operation temperature 110 °C
 Maximum operation pressure 10 bar
 Maximum operation pressure 0,2 bar
 Quality of heating water according to ÖNORM H 5195 or VDI recommendation 2035.

Operational data

For all water based heating systems in one and two pipe operation, for socket and convector heating systems.

Application field

Flat sealed connection G 3/4" ISO 228, with cantered dividing wall cross the valve's longitudinal axis for flow and return. Radiator flow connection is on the same side as flow connection on the valve. This ensures correct connection. (see sketch "structural characteristics")

Radiator connection

Connection inclusive submerged pipe is not included in package.

Not included in package

- 6274** Compression unit with O-ring seal for calibrated copper and steel tubes, tube outside diameter 10, 12, 14, 15, 16 and 18 mm.
- 6275** Compression unit O-ring seal and soft seal for hard stainless steel tubes and nickel-plated tubes, tube outside diameter 10, 12, 14, 15, 16 and 18 mm.
- 6276** Compression unit with massive plastic seal (EPDM) towards tube for copper and steel tubes, tube outside diameter 12, 15 and 18mm.
- 6098** Compression unit for PE-X, PB and Al-composite tubes.

Pipe connections

G 3/4"

To be ordered separately

Tube dimensions and article numbers are listed in the HERZ-Product range and gross price list.

In order to avoid deformation of union nut do not use any adjustable spanner or similar tooling for mounting of compression units. Steel and copper tubes have to be calibrated and cleaned accordingly. Usage of support sleeves is recommended. Lubricate thread of union nut with silicon oil. Usage of mineral oil destroys O-ring of clamping. Mounting instructions of compression unit have to be followed.

Mounting of compression units to pipe

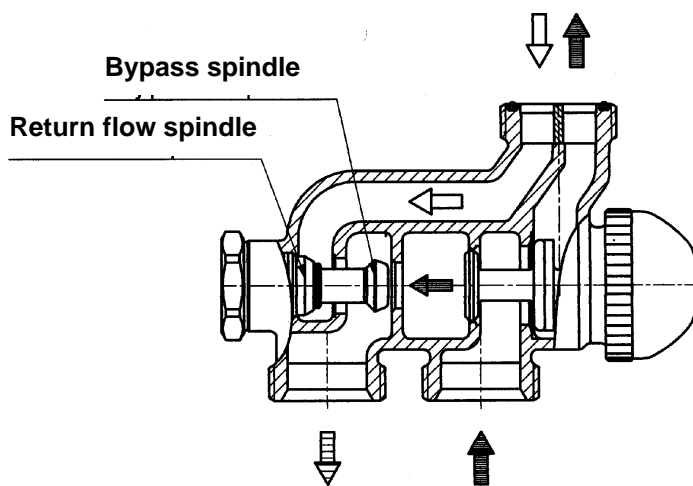
While utilizing HERZ-Compression units for copper and steel tubes respect the permissible temperature and pressure data according to EN 1254-2: 1988, table 5.

For plastic connections

Plastic tube connections are applicable for application classes 4 and 5 according to ISO 10508 (panel heating and radiator connection) and for PE-RT tubes (DIN 4721), PE-MDX (DIN 4724), PB and PE-X (DIN 4726) as well as plastic-metal-composite tubes (ÖNORM B 5157).

HERZ compression unit for plastic pipes

Maximum operating temperature of 95°C at 10 bar. It is the users responsibility to choose operating pressure P_{oper} and operating temperature T_{oper} per tube in accordance with standards and permissible operating data set by the tube manufacturer.



Constructional characteristic features

The lock spindle for return flow (return flow spindle) is located behind a metallic cover cap. For one or two pipe operation, the bypass-spindle runs concentrically on bearings.

Move the spindle clockwise to stop to achieve a two pipe position. Starting anticlockwise from this position, the bypass opens. With 1.5 revolutions you get the factory pre-setting of 55% radiator flow.

The switch spindle is operated by means of the HERZ-Multi-purpose key (1 **6625** 41) or any Allan key 4mm hex.

4 WA-T35 allows piping of tube installation, mounting of valves, and pressure test prior to assembly of radiator.

Pre-assembly

Thanks to a shut-off device of return flow spindle and thermostat upper part, the radiator can be removed without draining. The radiator has to be drained prior to dismantling. The open connection of the valve has to be protected by a cover R = 3/4" (1 **8525** 52). The return flow spindle is closed by means of the HERZ-Multi-purpose-key (1 **6625** 41) or any Allan key 10mm hex.

While opening the return flow spindle, a total opening will be reached after approximately 3 to 3.5 revolutions.

Caution: If the radiator is remounted and connected or the fitting is used in two pipe operation (bypass spindle closed), it is recommended to first open the bypass spindle anticlockwise (approximately 1 revolution), before return flow spindle is opened. After this operation, the bypass spindle may be closed again..

Dismounting of radiator

In order to repair failures, caused by foreign substances like dirt, welding or soldering residues, the thermostatic upper part can be changed under pressure by means of the HERZ-Changefix-exchange device.

Tausch des Thermostatoberteiles

An O-ring mounted in a brass chamber is used as spindle seal and can be changed during operation. The O-ring guarantees a maximum level of easy maintenance and provides a permanent free movement of the valve.

Spindle seal

1. Dismounting of HERZ-Thermostat head and HERZ-TS-hand wheel.
2. Unscrew O-ring chamber and O-ring and replace it. For this change it is necessary to hold up at the upper part with a wrench. Due to this dismantling process, the valve is completely open and tight which may lead to emerging water drops..
3. Remounting in reverse order.

Article number for HERZ-TS-90-O-ring-set: 1 **6890** 00.

Changing of O-ring chamber

The screw cap is for actuating during mounting (pipe purge). In order to achieve thermostatic function, remove screw cap and screw on thermostatic head. The system must not be drained.

Attention: All HERZ "H" Thermostats fit this valve.

Mounting of HERZ-Thermostat

If radiators and thermostats are covered (curtains, panelling), heat accumulation may occur. The thermostatic sensor is not able to sense room temperature and therefore regulation is impossible. In this case it is recommended to use the HERZ-Thermostat with remote sensor or remote control.

For details see product standard sheets.

Mounting directions for thermostat

In order to avoid penetration of dirt on valve seat, completely open valve after heating period. This is done in an anticlockwise direction.

Summer adjustments

In exceptional cases where the valve is not equipped with a HERZ-Thermostat, the HERZ-TS-Hand wheel replaces the screw cap.

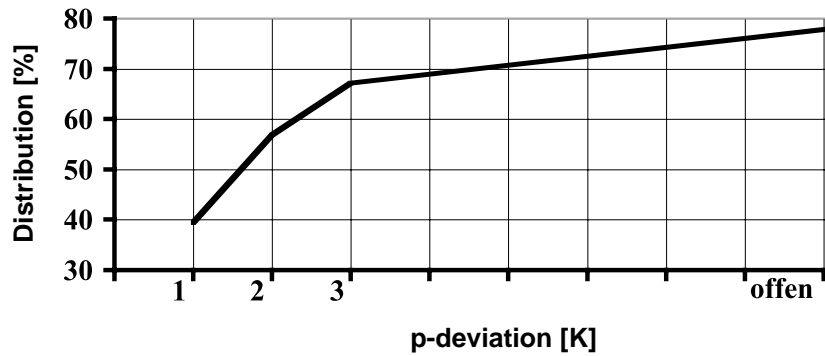
Follow enclosed mounting instructions.

HERZ-TS-Hand wheel

p-deviation	One pipe system (ring)	Two pipe system
Closed	0,86	-
2K	1,38	0,82
3K	1,44	0,97
Open	1,56	1,19

Kv-Values

Radiator distribution



**Radiator part
One pipe valve**

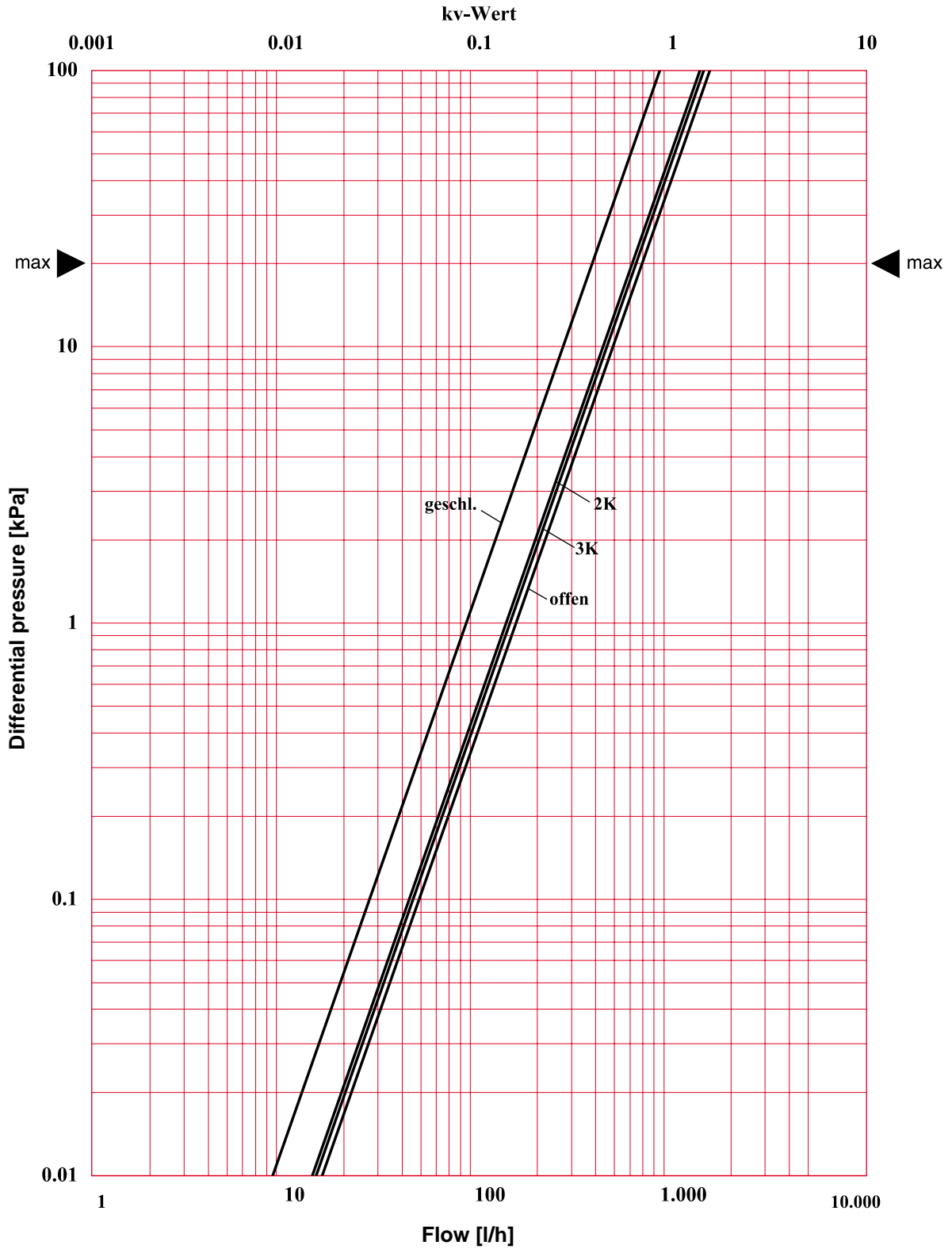
- 1 **6248** 01 Special connection elbow
- 1 **6625** 41 Multi-purpose-k
- 1 **6890** 00 HERZ-TS-90-O-ring-se
- 1 **9102** 98 HERZ-TS-90 Hand wheel "H" series 9000 "Design"
- 1 **9230** 98 HERZ-Design thermostat head "H" with position "0"
- 1 **9260** 98 HERZ-Design thermostat head "H"
- 1 **9200** 38 HERZ-Mini "H" with position "0"
- 1 **9200** 68 HERZ-Mini "H"
- 1 **7260** 98 HERZ-Thermostat head "H"
- 1 **7260** 83 HERZ-Thermostat head "H", model for the visually handicapped
- 1 **7780** 98 HERZ-Changefix-exchange device "H"

Accessories

- 1 **6398** 01 Thermostat upper part
- Change with HERZ-Changefix-exchanging device "H"

Spare upper parts

4 WA-T35, straight and angle model



Subject to alteration