

By setting the scale marks opposite the pointer it is possible to achieve approximately the following temperatures in the room. Deviations of a few degrees of temperature (K) are possible according to the mode of installation and the design of the heating system.

Mark	*	1	2	3	4	5	max.
~ °C	6	12	16	20	24	28	30

Thermostat 1 **9200** 30: Turn anticlockwise up to the maximum position (preset by the manufacturer), corresponds to approx. 30 °C.

Thermostat 1 **9200** 60: at scale mark "5", corresponds to approx. 28 °C.

Position "3" corresponds to a room temperature of approx. 20 °C. This means optimum comfort and energy saving.

In the "*" -position, the valve opens automatically at an ambient temperature of approx. 6 °C, thus preventing the system from freezing up.

In the "0" -position the thermostatic valve is shut off and the frost release is turned off.

After the end of the heating period, open thermostats completely by turning anticlockwise to prevent the formation of dirt deposits at the valve seat.

Theft protection clips are available which are fitted over the fastening nut.

Under no circumstances should the HERZ-thermostat be exposed to direct sunlight or to the effects of equipment emitting relevant quantities of heat (e.g. TV-sets). If the radiator is covered (e.g. by panelling or heavy curtains), a heat accumulation zone will be formed in which the thermostat cannot sense the room temperature properly and consequently is not in a position to control it. In these cases, use HERZ-thermostats with remote sensor or remote control

- 1 **6640** 00 Theft protection opener
- 1 **6807** 90 HERZ-TS-90-Assembly key
- 1 **9551** 02 Limiting pins for limiting and locking
- 1 **9552** 03 Theft protection (snap clips)
- 1 **9596** 44 Cover sleeve for thermostat fastening nut

Setting Options

Hand Wheel Scale

Maximum Position

Comfort Point "3"

Frost Release



Shutoff Function Thermostat 1 **9200** 30

Summer Position

Theft Protection

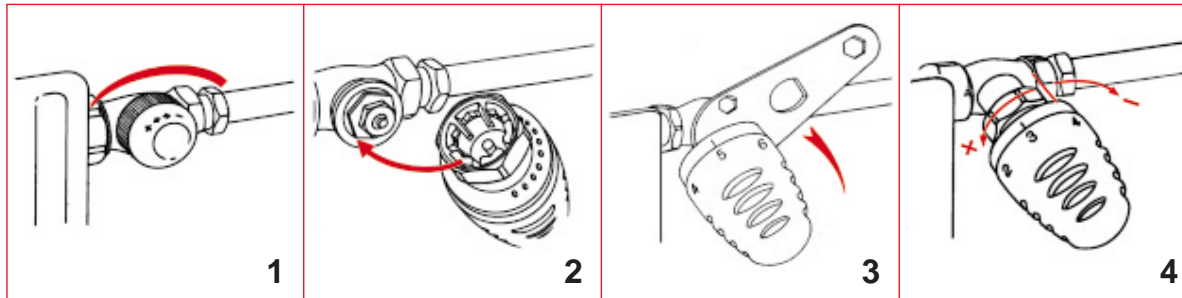


Important for Installation

Accessories

Installation

1. Remove screw cap or hand wheel from the thermostatic valve lower part.
2. Place thermostatic head in completely open position (as delivered) on the thermostatic lower part in such a way that the anti-twist lock engages and the setting is clearly visible
3. Attach union nut and tighten gently (30-mm-key).
4. Check for proper functioning by turning the hand wheel.



Concealed Limiting or Locking

Setting one or two plug-in limiting pins permits to limit or lock the turning range in such a way that it is invisible to and unchangeable by any unauthorised person.

The limiting pins are available as accessories. Set: Article number 1 9551 02.

Procedure

The base at the lower side of the thermostatic head is equipped with a hole circle for the limiting pins.

- Set the hand wheel of the thermostatic head to the desired limiting or locking position;
- Between positions "2" and "3" on the hand wheel scale there is a crossline which marks the points where the limiting pins are to be set.

- Lower Limit:
Insert pin in the hole aligning with the right end of the line.
- Upper Limit:
Insert pin in the hole aligning with the left end of the line.
- Blocking at one Setting:
Set one pin at each end of the line.

- The limiting pins must be inserted up to the stop (enlargement). They can be removed with an appropriate tool (flat pliers, etc.)

