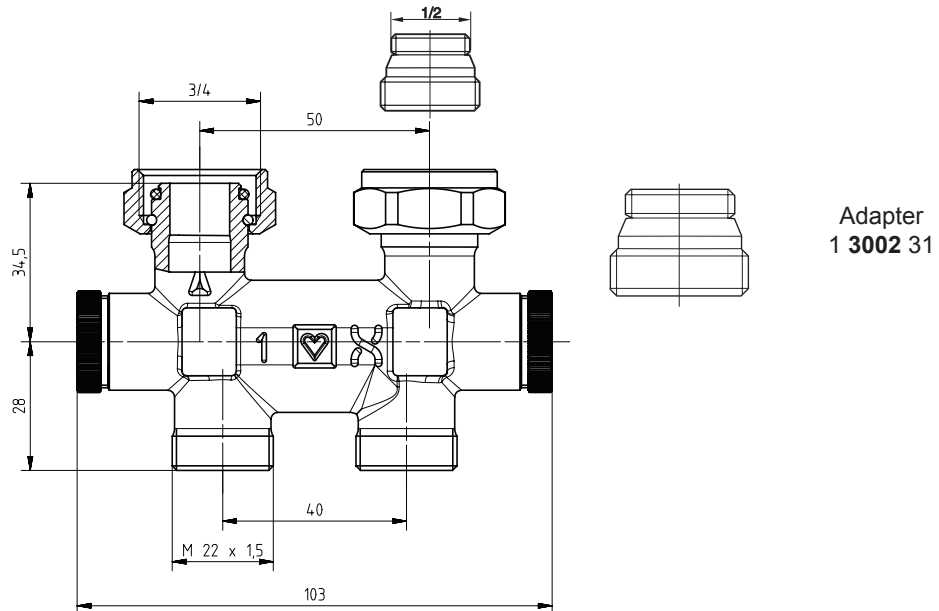


HERZ-3000 TP bypass body for one-pipe and two-pipe systems

Datasheet for HERZ-3000 TP, Issue 0720

☑ Model



| | | |
|--|-------------------------------|-------------------------------|
| Radiator connection | G 3/4 AG | Rp 1/2 IG |
| Two pieces enclosed | | 1 3002 31 |
| Pipe-connection thread | M 22 x 1,5 mm cone sealing | M 22 x 1,5 mm cone sealing |
| Bypass body for one pipe systems with shut-off | 1 3166 31 | 1 3166 32 |
| Bypass body for two pipe systems with shut-off | 1 3266 31 | 1 3266 32 |

Bypass body with shut-off, depending on the model for one pipe or two pipe system.

Bypass body straight-way form, freely rotating nut on radiator side, external thread on pipe M 22 x 1,5 for clamps.

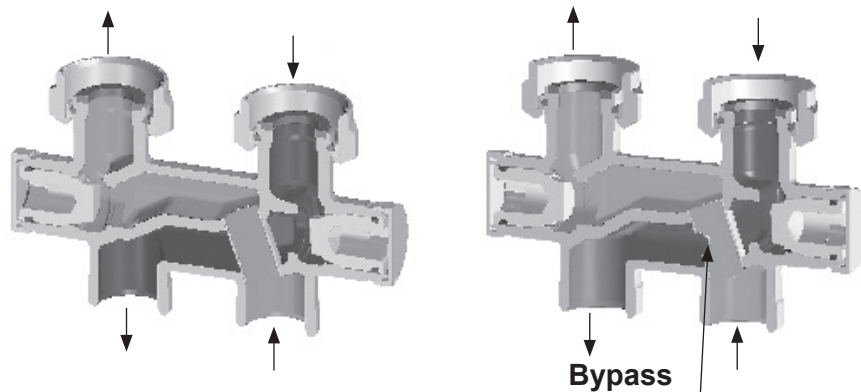
The bypass cannot be isolated, only the radiator can be isolated.

Center distance 50 mm to existing pipe installations radiator connection 40 mm centers and contrary flow and return directions.

☑ Operating mode

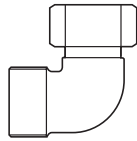
Version: **Two pipe system** („2“ in body)

Version: **one pipe system** („1“ on body)

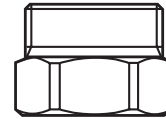


☑ Connections

1 **6248** 16 Connection angle 90 °,
M 22 x 1,5 mm male thread / M 22 x 1,5 mm female thread



1 **6244** 01 adapter,
M 22 x 1,5 mm female thread / G 3/4 male thread



☑ Compressions union

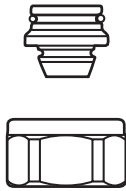
Pipe connection for copper-, weldable non-alloy steel- and plastic pipe

Pipe connection for copper and weldable non-alloy steel pipes:

Pipe connection for plastic and multilayer pipes:

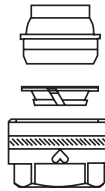
Union nut M22 x 1,5 mm

Union nut M22 x 1,5 mm



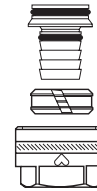
1 **6284** ..

Compression union metal-seated.
Not prepared for chrome-plated
metal pipes, or pipes made of
stainless steel



1 **6286** ..

Compression union with
massive rubber seal (EPDM)



1 **6066** ..

Plastic pipe connection with
double O-ring and insulating
washer

Data sheets for HERZ Compressions unions for weldable non-alloy steel-, copper and plastic pipes are available separately.

☑ Plastic pipe and press fitting

Plastic pipe connectors are suitable for application class 4 and 5 according to ISO 10508 (panel heating and radiator connection) and for pipes made of PE-RT (EN 22391), PB (EN 15876) and PE-X (EN 15875) as well as multilayer pipes (EN 21003)

Maximal operating temperature 95 °C at 10 bar

Real operating pressure and temperature are depending on the pipe system.

☑ Accessory

- 1 **6822** 40 Double rosette for a center distance of 40 mm
- 1 **6625** 00 Multi-purpose key
- 1 **3002** 31 2 Connection nipples with cone seal. Direct installation on radiator Rp 1/2.

☑ Operating data

Maximal operating temperature 120 °C

Maximal operating pressure 10 bar

Heating water quality according to ÖNORM H5195 or VDI-Standard 2035. The use of ethylene or propylene glycol in a mixing ratio 25 - 50 % is allowed. EPDM gaskets can be affected by mineral oils lubricants and thus lead to failure of the EPDM seals. Please refer to manufacturer's documentation when using ethylene glycol products for frost and corrosion protection.

☑ Field of application

Nickel-plated bypass bodies and single shutoff valves serve for connection of radiators with integrated valves to the pipe with a shutoff function. The HERZ 3000 TP is designed for refurbishment of existing installations and heating systems with old radiators manufactured by AGA or thermo panels. Center distance of 50 mm to existing pipe installations radiator connection 40 mm centers and contrary flow and return directions. Compression unions for pipe connection have to be ordered separately.

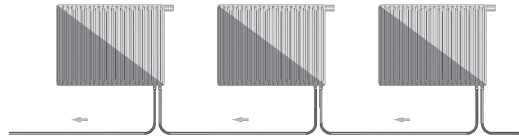
☑ Materials note

Pursuant to Article 33 of the REACH Regulation (EC No. 1907/2006), we are obliged to point out that the material lead is listed on the SVHC list and that all brass components manufactured in our products exceed 0.1% (w / w) lead (CAS: 7439-92-1 / EINECS: 231-100-4). Since lead is a component part of an alloy, actual exposure is not possible and therefore no additional information on safe use is necessary.

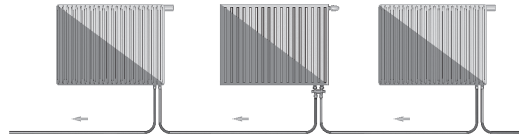
☑ Disposal

Local and currently applicable legislation must be observed for disposal.

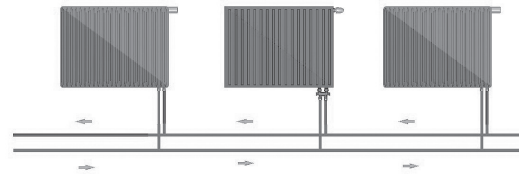
Existing one pipe system



Solution: One pipe system

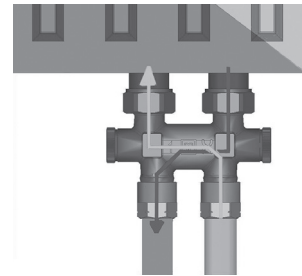


Solution: Two pipe system



☑ Function in detail

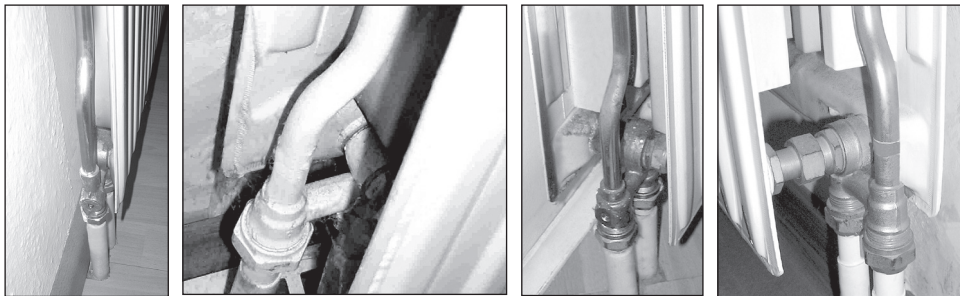
Bypass body is made for every valve radiator with a center distance of $50 \pm 1,5$ mm with connection thread G 3/4 or Rp 1/2.



☑ Constructive feature of the bypass body

The Bypass bodies are factory set for one pipe system at 40% of the amount of radiator water and can be altered at any time to suit another percentage (two pipe system = 100%). Radiator side there are two free moving union nuts and cone seal connections fitted. There are two connection nipples (1 **3002 31**) for Rp 1/2 included. The closed bypass body can be pre-mounted on the pipe side, the equipment filled and pressure checked and the radiators put on after interior work is completed (painters, carpet). With the system under pressure the radiators can be emptied and removed.

☑ Installation examples



☑ Mounting on radiators

The bypass bodies must be mounted, depending upon the radiator connection by using the 1 **3002 31** (Rp 1/2) connection nipples, cone sealed on the radiator. The free-moving nuts must be only moderately tightened using a spanner, SW 30, to protect the rubber seals. Single shut-off valves are designed for metallic seals and are fitted for radiator connection G 3/4 with a free-moving hexagonal nut. The radiator connection of the valves for Rp 1/2 has O-Ring seals and is easy to install with the assembly key 1 **6680 00**. For pre installed bypass bodies and valves, the uppersurfaces and union nuts should be protected and/or covered until they are connected to radiator.

☑ **Installation of compression union to the piping**

When installing the compression unions no adjustable wrenches or similar tool should be used as this may lead to distortion of the union nut. Weldable non-alloy steel and copper pipes must be cleanly calibrated and deburred, and the use of support sleeves is recommended. The thread of the union nut should be oiled with silicone oil during installation, but mineral oils damage the O-ring of the clamping rings. The installation instructions included with the compression unions must be taken into account. Remove the covering caps.

☑ **Disassembly of the radiator**

Remove cover caps.

Lock with a multi-purpose key SW 8/6 (1 6625 00) clockwise.

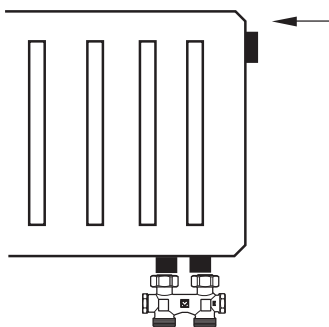
In one-pipe systems

Open union nuts, remove the radiator, the bypass remains in operation.

Thermostatic operation of the radiator

Thermostatic heads for direct installation on integrated valves of valve radiators with connection threads M30 x 1,5 (H) and clip or click fixing (D)

„H“ thermostatic heads with connection thread M 30 x 1,5

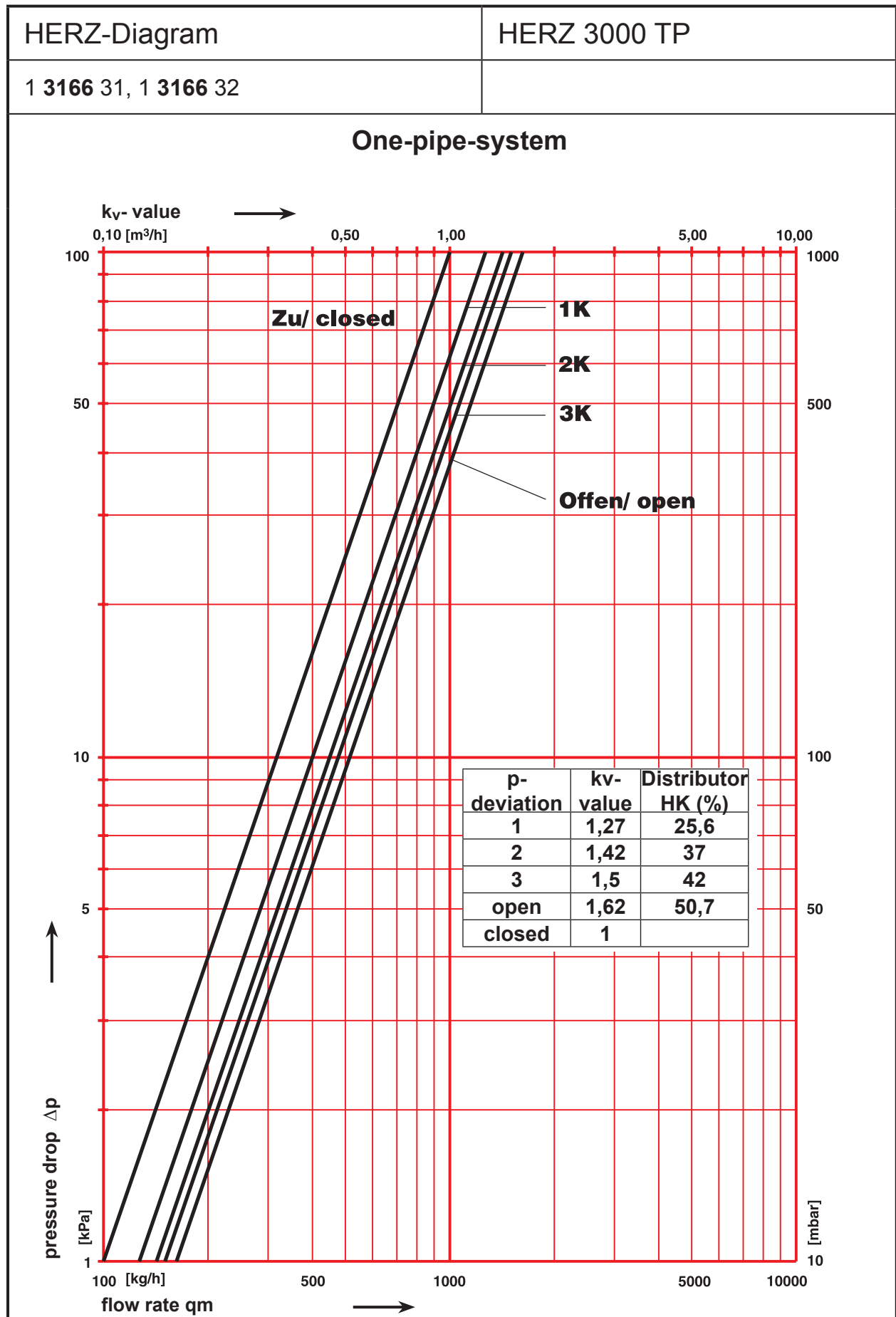


| | | |
|-----|-----------------|---|
| „H“ | 1 9230 98 | Designer thermostatic head with „0“ position |
| | 1 9260 98 | Designer thermostatic head with frost protection |
| | 1 9430 98 | Designer thermostatic head with remote sensor, and „0“ position, capillary pipe length 2000 mm |
| | 1 9460 98 | Designer thermostatic head with remote sensor and frost protection, capillary pipe length 2000 mm |
| | 1 9200 38 | Mini thermostatic head with „0“ position |
| | 1 9200 68 | Mini thermostatic head with frost protection |
| | 1 9200 83 | Mini thermostatic head with straight slits with „0“ position |
| | 1 9200 86 | Mini thermostatic head with straight slits and frost protection |
| | 1 9200 93 | Mini thermostatic head Mini-Turbo, with „0“ position |
| | 1 9200 96 | Mini thermostatic head Mini-Turbo, with frost protection |
| | 1 7260 98 | Thermostatic head with frost protection |
| | 1 9330 98 | Thermostatic head with remote adjustment, capillary pipe length 2000 mm |
| | 1 9860 98 | Herzcules with frost protection |
| | 1 9861 98 | Herzcules with frost protection, can be lowered from outside by 10 K |
| | 1 9861 48 | Herzcules with frost protection, can be lowered from outside by 4 K |
| | 1 9238 41,44,46 | Thermostatic head „DeLuxe“ with „0“ position |
| | S 9238 01-15 | Thermostatic head „DeLuxe“ with „0“ position |
| | 1 9430 98 | Designer thermostats with remote adjustment |
| | 1 9460 98 | Thermostat with remote adjustment for surface mounting |
| | 1 9330 98 | Thermostat with remote adjustment for mounting |
| | 1 9102 98 | Designer manual drive |

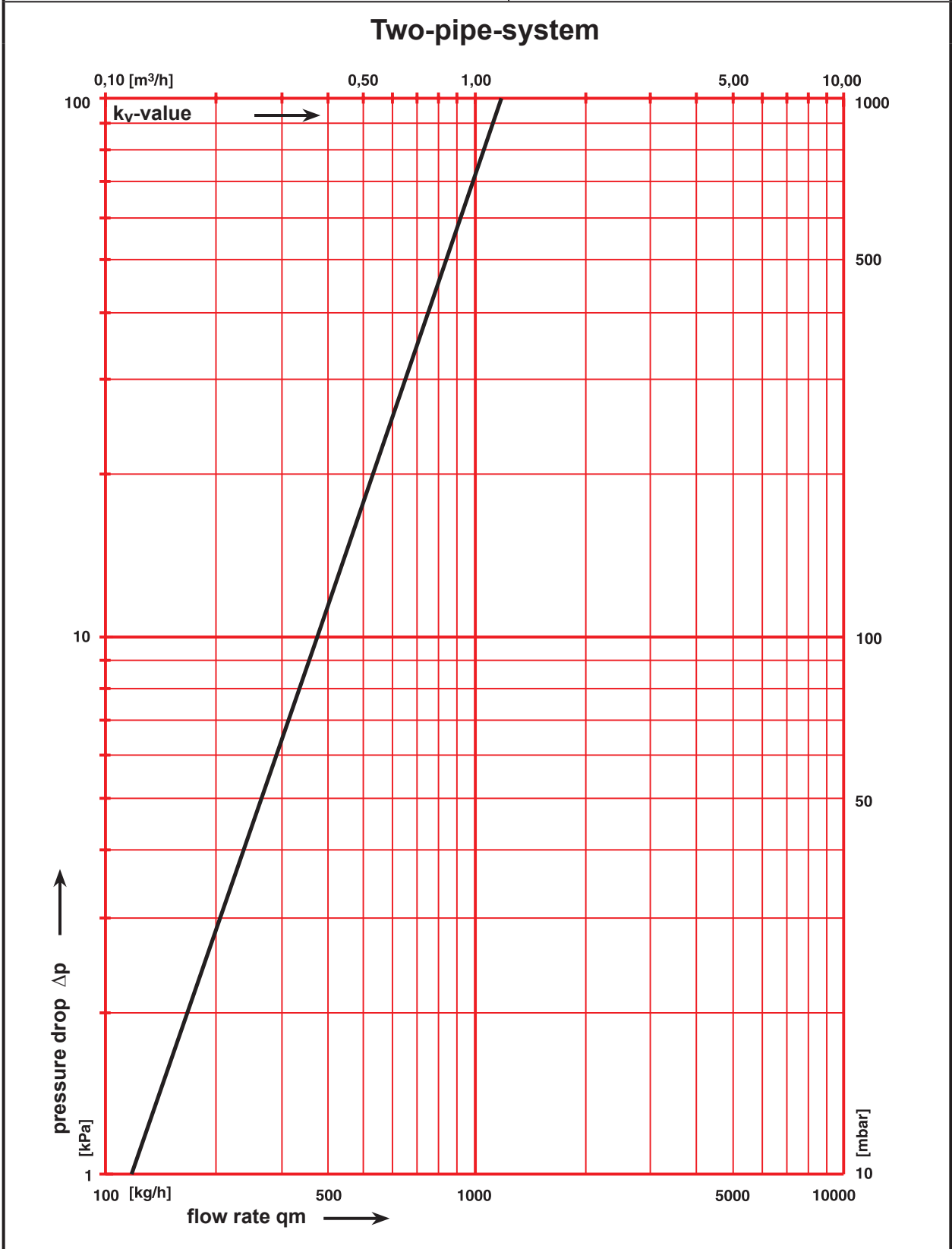
„D“ thermostatic heads with clip or click fixing

| | | |
|-----|-----------------|---|
| „D“ | 1 9230 99 | Designer thermostatic head with „0“ position |
| | 1 9260 99 | Designer thermostatic head with frost protection |
| | 1 7260 99 | Thermostatic head with frost protection |
| | 1 7260 84 | Thermostatic head for visually-impaired with setting markings on the hand wheel |
| | 1 9239 41,44,46 | Thermostatic head „DeLuxe“ with „0“ position |
| | S 9239 01-15 | Thermostatic head „DeLuxe“ with „0“ position |
| | 1 9330 99 | Designer thermostats with remote adjustment |
| | 1 9352 99 | Thermostat with remote adjustment suitable for mounting in flush boxes |
| | 1 9330 99 | Thermostat with remote adjustment |
| | 1 9102 99 | Designer manual drive |

Technical details of HERZ thermostats can be found on the product standard specification sheets



| | |
|----------------------|--------------|
| HERZ-Diagram | HERZ 3000 TP |
| 1 3266 31, 1 3266 32 | |



All specifications and statements within this document are according to information available at the time of printing and meant for informational purpose only. Herz Armaturen reserves the right to modify and change products as well as its technical specifications and/or if functioning according to technological progress and requirements. It is understood that all images of Herz products are symbolic representations and therefore may visually differ from the actual product. Colours may differ due to printing technology used. In case of any further questions don't hesitate to contact your nearest HERZ Branch-office