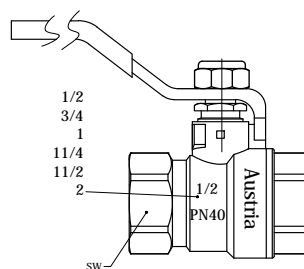
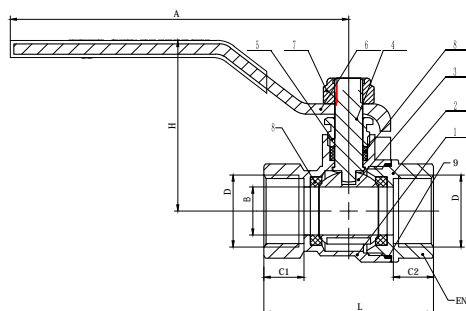


### ☑ Dimensions(mm)



ORDER Number	DN	D1	L	H	A	B	C1	C2	SW
3 2190 01	15	G1/2"	53.6	45.5	91	14.5	13.5	13.5	SW25.5
3 2190 02	20	G3/4"	58.5	57.5	111	20	13	17	SW32
3 2190 03	25	G1"	71	60	122	25	16	16	SW40
3 2190 04	32	G1 1/4"	77	70	119	30.5	15	17	SW50
3 2190 05	40	G1 1/2"	93	82	148	38	19.5	19	SW56
3 2190 06	50	G2"	108	96	146	50	18.5	20	SW67

### ☑ Materials:

Body:	(1)Bronze
Cap:	(2)Bronze
Ball:	(3)Brass
Stem:	(4)Brass
Gland:	(5)Brass
Handle:	(6)Q235
Nut:	(7)Stainless steel SS304
Seal	(8)PTFE
O Ring	(9)NBR

### ☑ Data:

max. operating pressure: PN40  
max. operating temperature: 120°C (5 bar)  
The use of ethylene, or propylene glycol in a mixing ratio 25- 50% is allowed.

### ☑ Application:

The ball valves are installed as stop valves. Field of application are building services, such as in heating or chilled water plant in buildings. EPDM Sealing can be destroyed by organic hydrocarbons, which are occurring in natural gas or mineral oil. For this we recommend ball valves for natural gas.

### ☑ Installation and maintenance:

HERZ recommends the use of standard thread sealants for the connection between the ball valve and pipe. The valve should always be fully opened or closed, not used in intermediate positions. The valves do not require any special maintenance. At least twice a year, the ball valves should be operated.

DN	15	20	25	32	40	50
Kv	17	34	55	102	165	270
Kvp	15,8	31,5	51	95	153	250

All specifications and information within this document are reflecting the information available at the time of going to print and meant for informational purpose only. Herz Armaturen reserves the right to modify and change products as well as its technical specifications and/or its function according to technological progress and requirements. All diagrams are indicative in nature and do not to be complete. It is understood that all images of Herz products are symbolic representations and therefore may visually differ from the actual product. Colours may differ due to printing technology used. In case of any further questions don't hesitate to contact your closest HERZ Branch-Office.