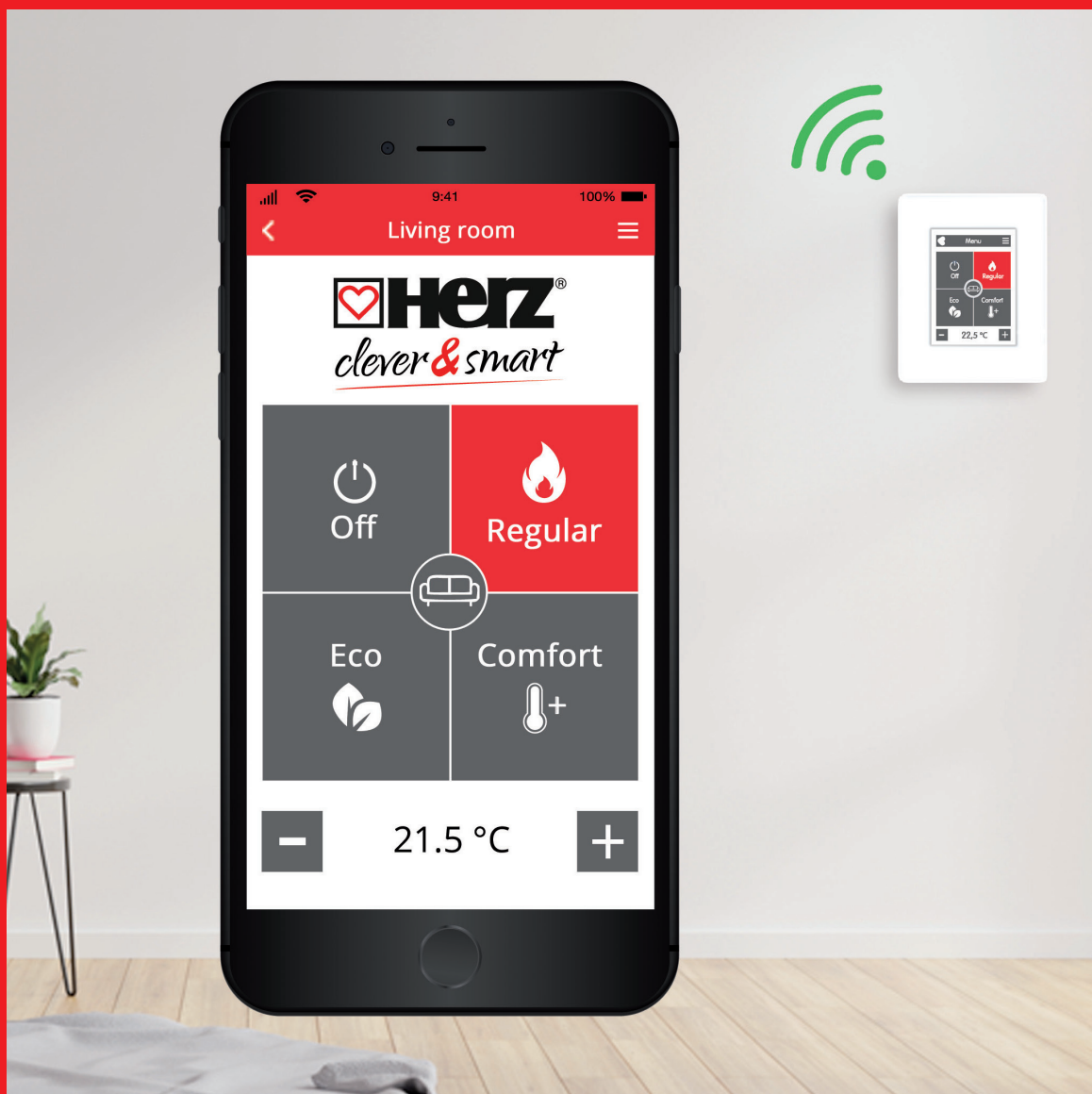


HERZ clever&smart

Smart control for surface heating and cooling



❑ Overview

HERZ clever&smart is the intelligent solution to adapt your home to your needs. The HERZ clever&smart family is the complete package for an intelligent and controlled heating and cooling system. Whether wired or wireless, heating or heating and cooling - the HERZ clever&smart family offers the right and smart solution for temperature comfort. Consisting of a Control Box, a Room Controller and additional LEDcontrollers or Room Sensors, HERZ clever&smart can be put together individually. A distinction is made between systems for heating only or heating and cooling.

The Control Box is not only a simple signal distributor, but a heating and cooling controller. The flow temperature can be controlled according to weather conditions and dew point. The Room Controller Clima, equipped with a color touch display, measures the temperature as well as the relative humidity. It is also used to configure and operate the system. With the LEDcontroller Clima it additionally measures and displays the air quality.



After the revolutionary development of smartphones that make our everyday life easier, smart home appliances have also become an important part of our lives. This smart technology is also known in building technology. HERZ Armaturen goes one better and offers the complete package for an intelligent and controlled heating and cooling system. HERZ clever&smart is the intelligent solution to adjust your room temperature to your needs.

❑ Benefits

- ❑ Usage of both wired and wireless components in 1-system solution
- ❑ Air quality measurement and display
- ❑ One solution for both surface heating and cooling
- ❑ Environmentally friendly power supply of the radio components by means of 230 VAC, no batteries required
- ❑ Fast configuration through commissioning assistant
- ❑ Simple operation through clear text displays
- ❑ Dew point guided mixer control
- ❑ Remote communication via HERZ clever&smart mobile app in many languages



☑ HERZ clever&smart App

The entire system can also be connected to a smartphone or tablet via WiFi if desired. With the app, the desired room temperature at the desired time can be conveniently set from anywhere and adapted to one's own daily routine. In addition, the app, which is available in a wide range of languages, also offers simple communication for the service technician. The mobile app also provides you with an overview of the rooms, temperatures and relative humidity.



☑ The air is clean

The Index of Air Quality (IAQ) serves as a benchmark for air quality. This plays a major role in our health indoors. The more stale the air, the higher the risk of infection or illness. Most of the time, people do not ventilate until the stuffy air is already noticeable.

HERZ clever&smart LEDcontroller Clima measures the air quality and the CO₂ content in the interior through the integrated sensors and shows these via color codes on the display of the LEDcontroller. In this way, the first signal to take action is given in real time and before it is too late.



☑ Measurement and display of the ventilation quality

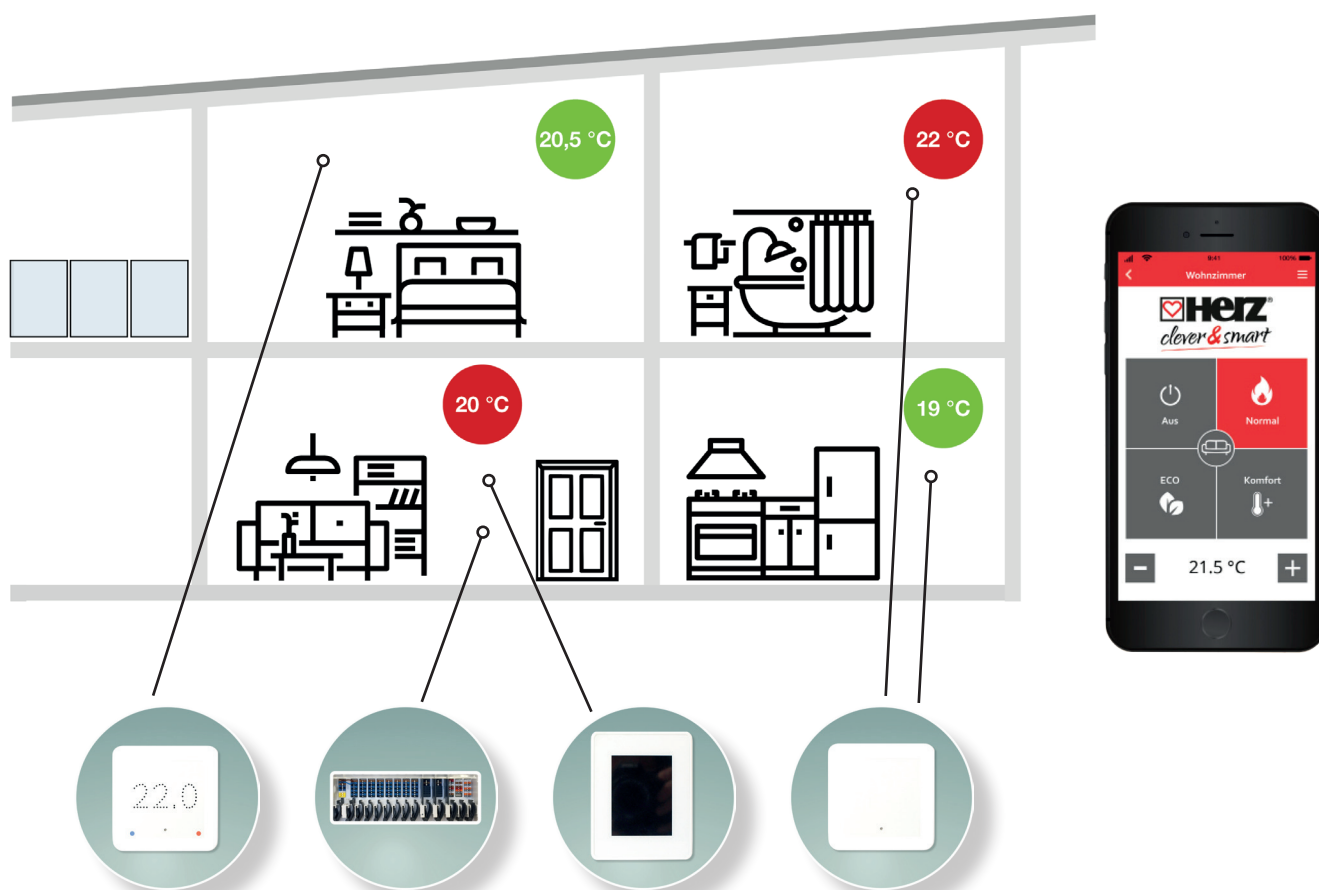
- Measurement of total concentration VOC Volatile Organic Compounds - volatile organic compounds
- VOC sensors detect: CO₂, CH₄, LPG, alcohols, ketones, organic acids, amines, aliphatic hydrocarbons, aromatic hydrocarbons
- Aggregation of the measured values to an index of air quality Index of Air Quality - IAQ
- Classification according to EPA (United States Environmental Protection Agency)
- Visualization via color codes

HERZ clever&smart offers you ease of use and comfort for a controlled and intuitively adjustable heating and cooling system. Easy operation can be done remotely with iOS / Android apps as well as with touch sensor controllers included in various product packages. HERZ clever&smart reduces your energy costs while increasing comfort.

☑ Heating regulation

The HERZ clever&smart control system can be easily configured via a Room Controller with color touch display. Operable LEDcontrollers or Room Sensors, either wired or wireless, also provide information on the room temperature. In this way, HERZ clever&smart can ensure the right comfortable temperature in the rooms at all times.

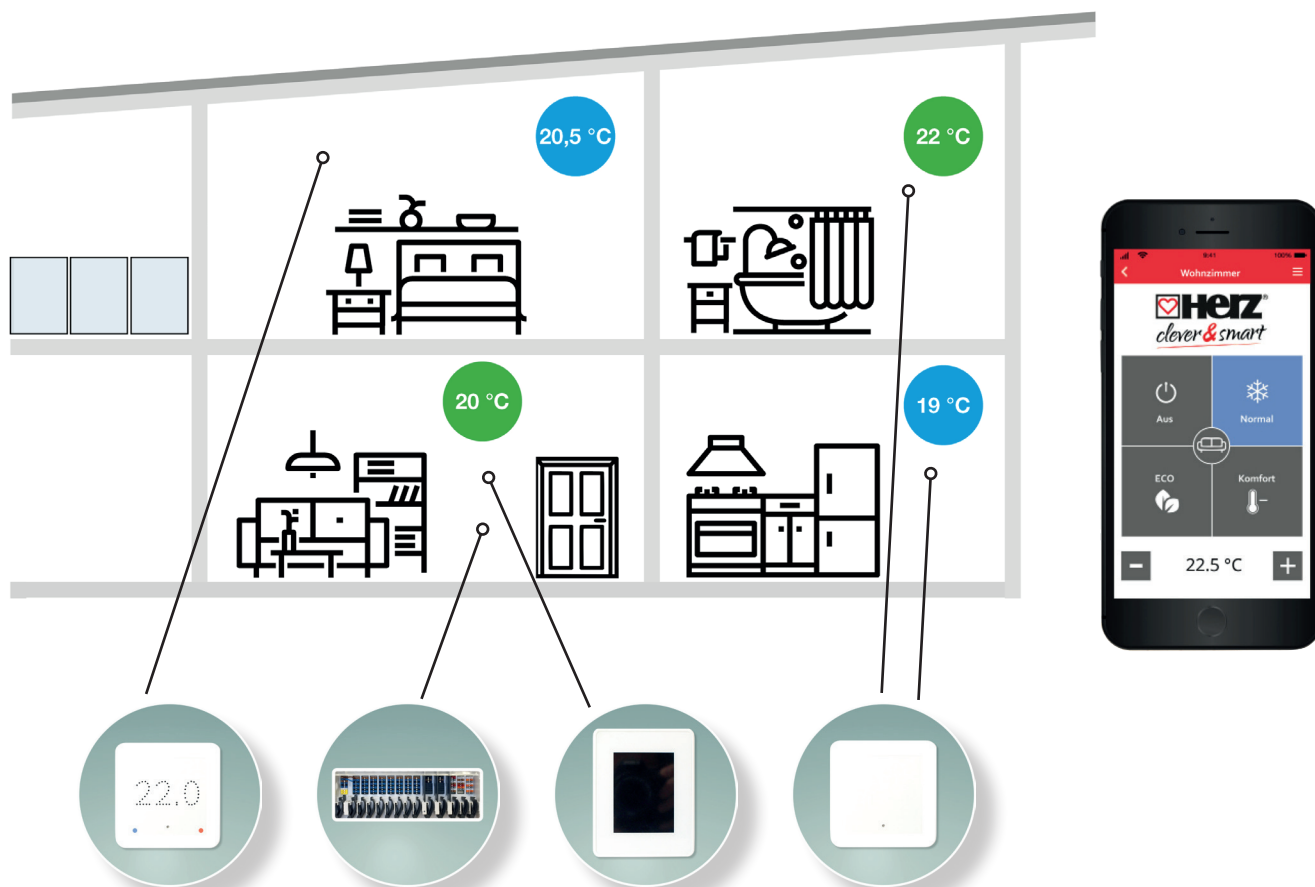
For convenient operation with a smartphone, all that is required is to connect the Room Controller to an Internet-enabled WLAN. The free HERZ clever&smart app, which is available in many languages, enables remote access to the HERZ clever&smart control system.



- ☑ Room Controller with colorful 2.8" touch display with glass surface, plain text displays, with or without WiFi functionality
- ☑ LEDcontroller with touch functions for displaying the room temperature and for changing the set temperature
- ☑ Room Sensors for measuring the room temperature
- ☑ Control Box heating for the control of the thermomotors and, if required, for controlling the heating circuit pump, mixer and heat generator
- ☑ Control of up to 16 rooms with up to 4 circuits each possible
- ☑ Use of wired components and wireless components in 1 system
- ☑ Environmentally friendly power supply for all radio components by means of 230 VAC, no batteries required
- ☑ App for iOS or Android in many languages for remote communication

☑ Heating and cooling regulation

The HERZ clever&smart control can be easily configured via a Room Controller Clima with colored touch display. The set temperature can be changed directly on the operable LEDcontroller Clima. Furthermore, the LEDcontroller Clima displays information about the room temperature as well as the relative humidity, the air quality and the CO₂ content of the room air. The air quality is additionally visualized according to the Index of Air Quality (IAQ) by means of colored LEDs. Room Sensors also provide information on room temperature and relative humidity. In this way, HERZ clever&smart can ensure the correct comfortable temperature in the rooms by means of both heating and cooling, as well as controlling the supply temperature according to the dew point. For convenient operation with a smartphone, only the Room Controller Clima needs to be connected to an Internet-enabled WLAN. The free HERZ clever&smart app, which is available in many languages, enables remote access to the HERZ clever&smart control system.



- ☑ Room Controller Clima with colorful 2.8" touch display with glass surface, plain text displays, with or without WiFi functionality
- ☑ LEDcontroller with touch functions for changing the set temperature and displaying the room temperature, relative humidity, air quality and CO₂ content of the room air
- ☑ Room Sensors for measuring the room temperature
- ☑ Control Box Clima for controlling the thermomotors and, if required, for controlling the heating circuit pump, mixer (dew point controlled), heat generator, chiller or dehumidifier
- ☑ Control heating and cooling of up to 16 rooms with up to 4 circuits each possible
- ☑ Use of wired components and wireless components in 1 system
- ☑ Environmentally friendly power supply for all radio components by means of 230 VAC, no batteries required
- ☑ App for iOS or Android in many languages for remote communication

☑ HERZ clever&smart Family

Control Box / Control Box Clima

- ☑ 8 zones controllable with up to 4 actuators
- ☑ Outputs for pump and mixer, heat and cold demand
- ☑ Mixer control weather-compensated or dew point controlled
- ☑ Status indication by means of 14 LEDs
- ☑ Several housing units can share data



Control Box	3 F810 11
Control Box Clima	3 F810 12

Room Controller / Room Controller Clima

- ☑ For configuration and operation of the system
- ☑ Glass front with colored touch display
- ☑ Self-explanatory operator guidance with plain text display
- ☑ Versions for heating or for heating and cooling with air humidity detection
- ☑ Each with or without WLAN module
- ☑ Dimensions 95x75x19 mm



	with WiFi	without WiFi
Room Controller	3 F810 23	3 F810 21
Room Controller Clima	3 F810 24	3 F810 22

LEDcontroller / LEDcontroller Clima

- ☑ In addition to temperature measurement, the climate version the air humidity, air quality and CO₂ are measured
- ☑ Colored signaling of air quality
- ☑ Changing the room setpoint temperature via touch display
- ☑ Each with or without WLAN module
- ☑ Dimensions 55x55 mm for common switch programs



	with WiFi	without WiFi
LEDcontroller	3 F810 33	3 F810 31
LEDcontroller Clima	3 F810 34	3 F810 32

Room Sensor / Room Sensor Clima

- ☑ Versions for heating or for heating and cooling with humidity detection
- ☑ Each with or without WLAN module
- ☑ Dimensions 55x55 mm for common switch programs



	with WiFi	without WiFi
Room Sensor	3 F810 42	3 F810 41
Room Sensor Clima	3 F810 44	3 F810 43

Room Sensor narrow (It) / Room Sensor Clima narrow (It)

- ☑ Versions for heating or for heating and cooling with air humidity detection
- ☑ Sensors integrated in Bticino NT 4950
- ☑ Dimensions 21x43 mm for common Italian switch programs

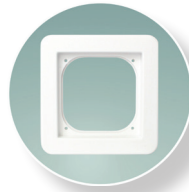


Room Sensor (It)	3 F810 61
Room Sensor Clima (It)	3 F810 62

☑ HERZ clever&smart Family

Single frame

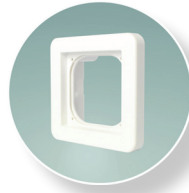
- ☑ For LEDcontrollers or Room Sensors
- ☑ Pure white plastic frame RAL 9003
- ☑ Matt eroded surface with UV protection
- ☑ Dimensions 80×80×11 mm (H×W×D)



3 **F810 51**

Set surface frame (1-Wire)

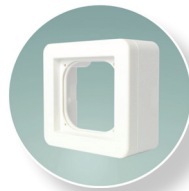
- ☑ For surface mounting of LEDcontroller or Room Sensors in 1-Wire version
- ☑ Pure white plastic frame RAL 9003
- ☑ Matt eroded surface with UV protection
- ☑ Dimensions 80×80×20 mm (H×W×D)



3 **F810 52**

Set surface frame high (WiFi)

- ☑ For surface mounting of LEDcontroller or Room Sensors in WiFi version
- ☑ Pure white plastic frame RAL 9003
- ☑ Matt eroded surface with UV protection
- ☑ Dimensions 80×80×40 mm (H×W×D)



3 **F810 53**

Outdoor sensor

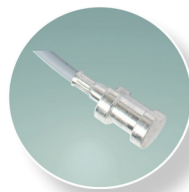
- ☑ Measurement temperature -50 °C to +105 °C
- ☑ Connection via 1-wire bus to the Control Box or Control Box Clima (3-pole)
- ☑ Gray plastic housing protection class IP65
- ☑ Incl. cable gland and mounting material



3 **F810 73**

Contact sensor

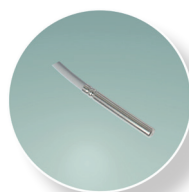
- ☑ Measurement temperature -35 °C to +105 °C
- ☑ Connection via 1-wire bus to the Control Box or Control Box Clima (3-pole)
- ☑ Aluprism 15×20 mm, incl. pipe clamp 32-50 mm
- ☑ Cable 3×0.25 mm², 0.6 m long



3 **F810 71**

Immersion sensor

- ☑ Measurement temperature -35 °C to +105 °C
- ☑ Connection via 1-wire bus to the Control Box or Control Box Clima (3-pole)
- ☑ Sensor sleeve stainless steel Ø 6×50 mm
- ☑ Cable 3×0,25 mm², 2 m long



3 **F810 72**

 HERZ Armaturen GesmbH - Wien

 Herz Armaturen Ges.m.b.H.

 herz.armaturen

 Herz Armaturen Ges.m.b.H.



HERZ Armaturen Ges.m.b.H.

Richard-Strauss-Straße 22, 1230 Viena, Austria

T: +43 1 616 26 31-0, F: +43 1 616 26 31-227

E-Mail: office@herz.eu

www.herz.eu

