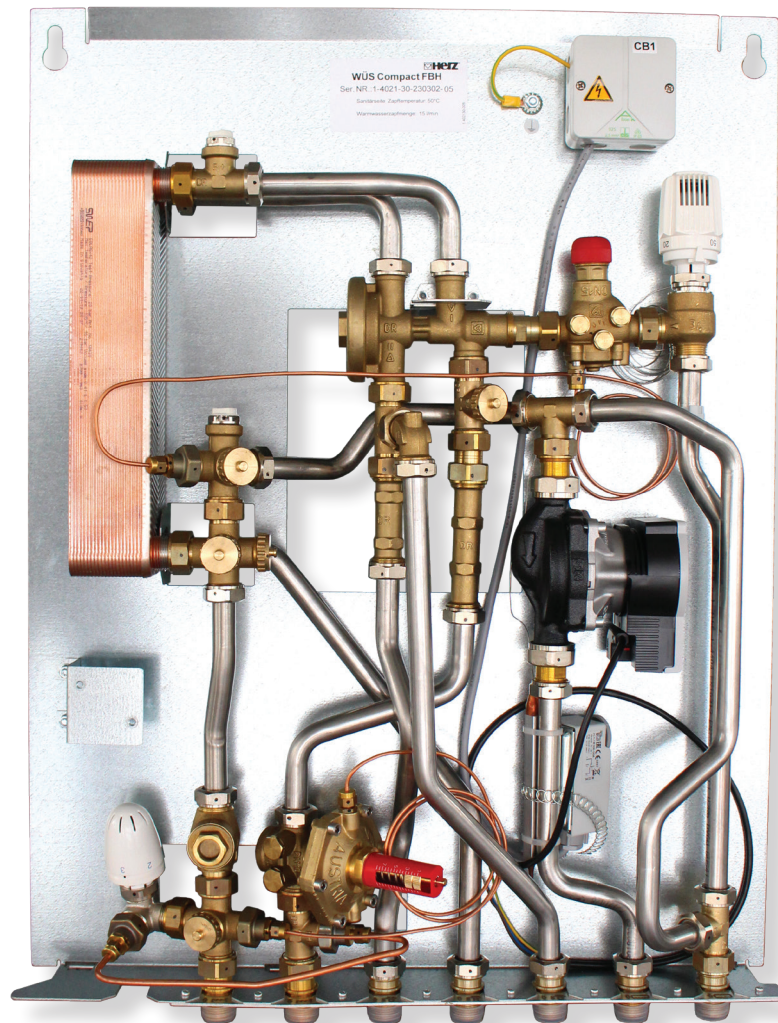


Hydraulic Interface Unit compact

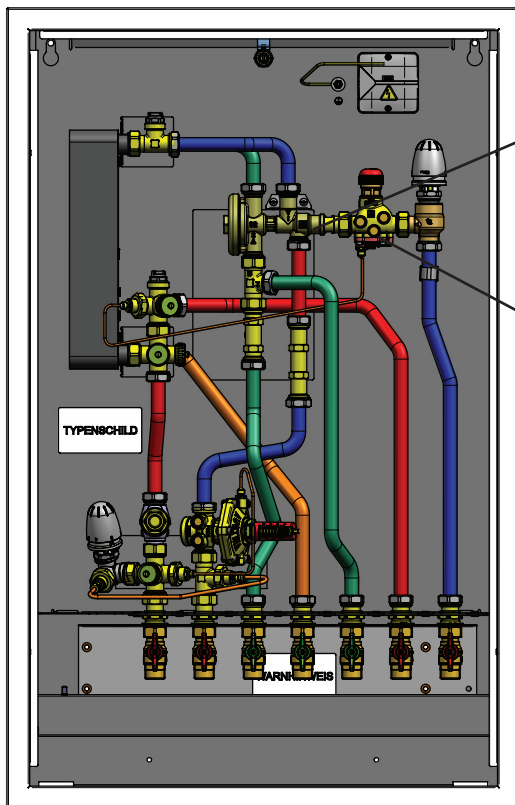
Safe and reliable system



☑ HIU compact

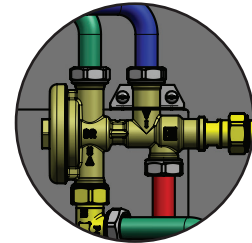
The conventional and most common method of heating water to date is to use a hot water tank. This type of device heats the water long before it is used and stores it in a hot state.

The heat losses that are unavoidable in this process (depending on the temperature) which requires regular reheating and building-wide hot water circulation. The disadvantages of this type of water heating are well known. The occurrence of legionella should be prevented at an early stage in this process by means of design measures or process modifications (hygienic hot water preparation). All these measures aim at avoiding the storage of hot water for a certain period of time in order to prevent the spread of legionella. This type of device, which does not require a storage tank in its function, is known under the generic term "instantaneous water heater".



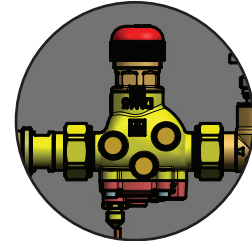
New generation PT control valve

- ☑ • Heat pump version with low flow temperature available
- Optimized hot water priority function
- KIWA accredited



☑ 4 in 1 - Differential Pressure Control Valve (DPCV)

- Adjustable flow limitation
- Manual shut-off
- Zone valve function in conjunction with HERZ thermomotor
- 20 kPa differential pressure regulator



☑ Benefits

- ☑ Various mounting options, on the wall or in the flush-mounted cabinet, e.g. pre-installed with integrated heating distributor
- ☑ Safe and reliable operation with minimal service costs
- ☑ Time and cost-saving installation, as only three supply pipes are required in one riser for all flats
- ☑ Decentralised and hygienic drinking water heating according to the continuous flow principle. No drinking water reserve required
- ☑ Ball valves on pre-assembly bracket for installation without having to install the HIU module at an early stage of the project
- ☑ HIU piping and heat exchanger made of high-quality stainless steel
- ☑ 4 in 1 secondary side DPCV and adjustable primary side DPCV 25 - 60 kPa already included
- ☑ Lowest return temperatures enable the operation of highly energy-efficient heating networks
- ☑ The continuous flow heating enables a permanent supply when hot water is required
- ☑ HIU is a complete package consisting of all components mounted on a frame, factory assembled and tested
- ☑ Minimal space requirement - fits in 100 mm drywall



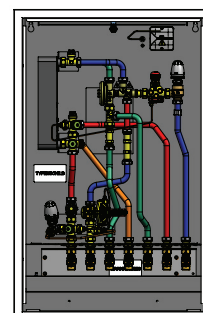
☑ Reliable water heating

In standby mode, the heating water flows from the primary circuit (district heating pipe) via a bypass, which is kept at operating temperature by a return temperature limiter. If hot water is drawn from a tap by a domestic consumer connected to the system, the pressure temperature controller allows both the cold water and the primary heating circuit to flow. Cold water flows through the heat exchanger, is heated and is promptly available as hot water at the hot water tap.

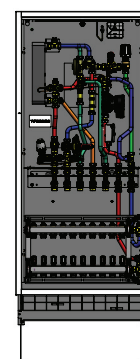
The temperature of the domestic hot water is controlled by a thermostatic controller. HIU compact stations also offer a priority valve that ensures that the majority of the supply energy for hot water preparation is available at the tap.

☑ HIU compact family

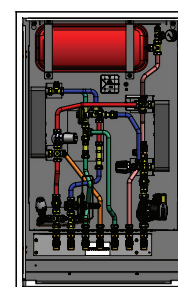
☑ **HIU compactRAD** is designed to supply radiator heating systems with heating loads up to 15 kW. The unit has a 4-in-1 HERZ differential pressure regulator set at 20 kPa to ensure proper operation of typical thermostatic radiator valves in the home. It also acts as a zone valve to control space heating via a room controller, has a reinforced cap for manual shut-off and has the ability to limit an adjustable maximum flow. An adjustable primary-side HERZ DPCV 25 - 60 kPa is also fitted to achieve automatic and dynamic hydraulic balancing between multiple units. The return temperature of the space heating can be adjusted with the built-in return temperature limiter to ensure the highest possible system efficiency.



☑ **HIU compactUFH** is designed to supply radiant panel heating systems with heating loads up to 12 kW. The unit has a 4-in-1 HERZ differential pressure regulator set at 20 kPa to ensure proper operation of the radiant heating system in the home. It also acts as a zone valve to control space heating via a room controller, has a reinforced cap for manual shut-off and has the ability to limit an adjustable maximum flow. An adjustable primary-side HERZ DPCV 25 - 60 kPa is also fitted to achieve automatic and dynamic hydraulic balancing between multiple units. A mixing bypass with thermostatic temperature control and the integrated high-efficiency circulation pump set low flow temperatures between 20 - 50 °C.

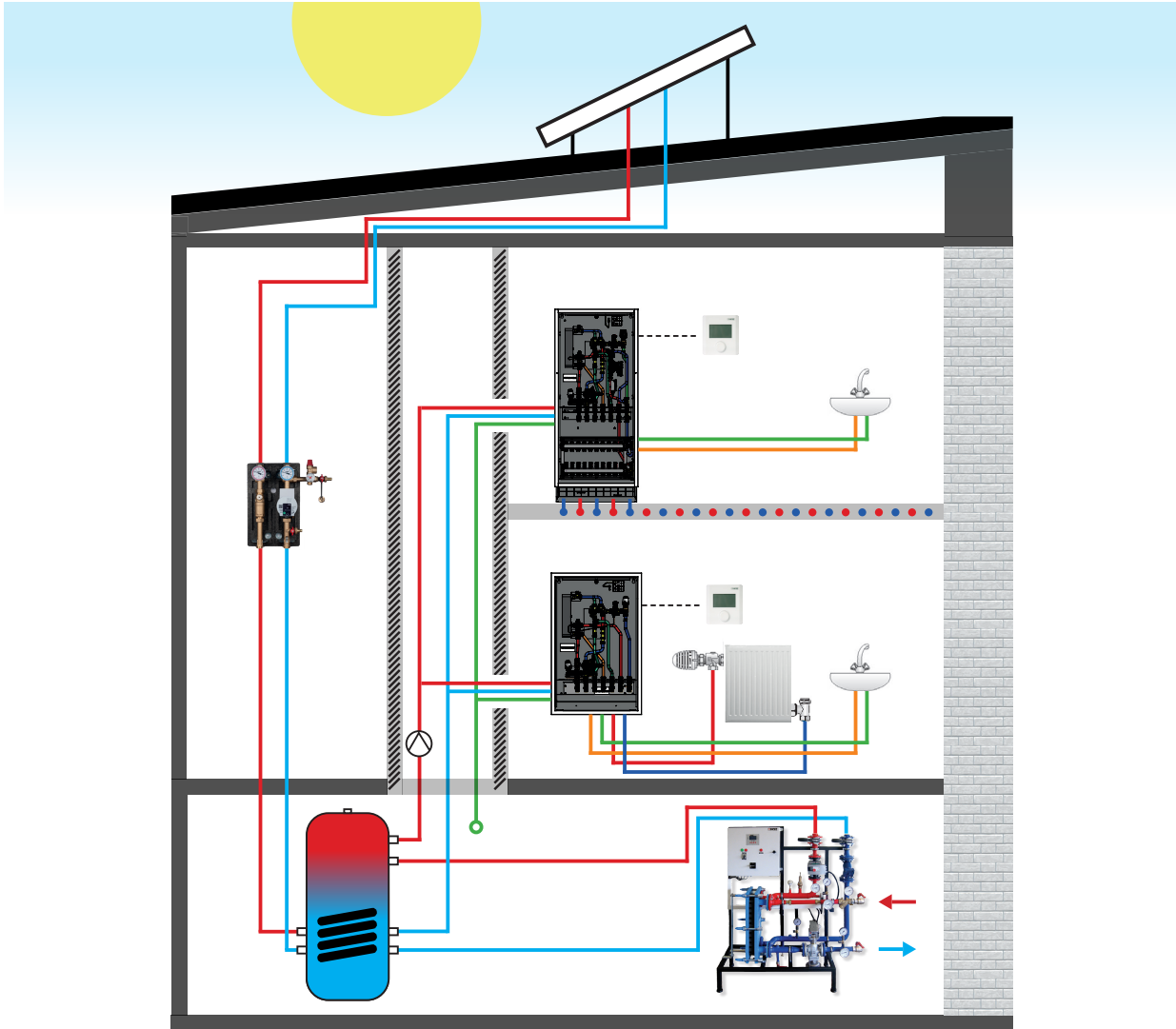


☑ **HIU compactINDIRECT** is designed to supply radiator or underfloor heating with complete hydraulic separation of the heating system from the primary-side supply system. The flow temperatures for the room heating can be set between 40 and 70 °C, a highly efficient circulation pump is included in the scope of delivery. The unit has a zone valve for controlling the space heating via a room controller. An adjustable primary-side HERZ DPCV 25 - 60 kPa is also fitted to achieve automatic and dynamic hydraulic balancing between these.



☑ The performance of the water heating

Low flow and return temperatures are the key to meeting today's requirements for system efficiency in the generation and transport of heat. HERZ HIU offer excellent performance in this respect and are therefore the perfect partner for any district heating network as well as for systems using condensing technology. As renewable energy sources are usually connected to a buffer tank, they can be easily integrated into such a system and help to further reduce emissions and costs whenever they are available. HERZ HIU are offered in various 4 hot water output levels from 11 to 22 l/min tap capacity, so that different flat sizes can be easily accommodated.



☑ Fit for the tasks of today

In contrast to the hot water storage method, the HIU only operates when hot water is needed, i.e. when it is „tapped“. HIUs are designed and optimised for operation in district and local heating networks. They are extremely efficient despite their compact design. Their field of application is concentrated on single-family households (e.g. two adults, two children) in closed flats on a multi-storey basis - especially for the frequent case of a retrofitted district heating supply. The units are also ideally suited for use in new buildings and detached houses.

Depending on the potential of the main supplier, HERZ HIUs have sufficient power for every application to be able to meet the usual comfort expectations of consumers. The decisive quality criterion for the user in the practical use of such units is the flow rate of the supplied hot water per time unit (minute). In addition, the hot water must have the desired or preset temperature and also be kept at this temperature during the entire tapping time.

☑ Order data for HIU compactINDIRECT

HIU compactINDIRECT				
Draw off capacity	11 l/min	15 l/min	18 l/min	22 l/min
WÜS compact IND	1 4021 38	1 4024 55	1 4024 43	1 4024 56
WÜS compact IND TSR	1 4021 35	1 4021 36	1 4024 88	1 4021 37
WÜS compactIND TSR insulated	1 4021 41	1 4021 42	1 4024 93	1 4021 43
DHW circulation set	1 4024 73			
Flush cabinet short, 120 mm deep	1 4024 51			
Front frame with door short	1 4024 52			
Cover WÜS compactINDIRECT	1 4024 57			
Pre-assembly strip WÜS compact	1 4024 49			
Adapter piece for heat meter sensor M 10 x 1 mm	1 4111 60			
Empty weight module	27 kg			
Connection	Male thread ¾" flat sealing			
Nominal pressure	16 bar primary / 3 bar secondary			
Max. supply temperature WÜS compactIND	70 °C			
Max. supply temperature WÜS compactIND TSR	85 °C			
Min. flow pressure MCW	2,8 bar			
Circulation pump space heating	Wilo Para RS 15/6 (SCU) / or similar			
Circulation pump DHW circulation	Wilo Star-Z NOVA / or similar			

MCW - mains cold water, UFH - under floor heating, TSR - with thermostatic control valve, DHW - domestic hot water, NT - radiant heating version, HT - radiator heating version, NTHT - radiant heating version with additional high temperature outlet

☑ Order data for HIU compactFBH

HIU compactUFH				
Draw off capacity	11 l/min	15 l/min	18 l/min	22 l/min
WÜS compactUFH	1 4021 29	1 4021 30	1 4024 42	1 4021 31
WÜS compactUFH TSR	1 4021 26	1 4021 27	1 4024 87	1 4021 28
WÜS compactUFH TSR insulated	1 4021 32	1 4021 33	1 4024 92	1 4021 34
DHW circulation set	1 4024 73			
Flush cabinet short, 90 mm deep	1 4024 47			
Flush cabinet short, 150 mm deep (in combination with circulation set)	1 4021 63			
Front frame with door short	1 4024 48			
Flush cabinet long, stainless steel distributor connection **, 150 mm deep	1 4021 61			
Front frame with door long	1 4021 62			
Cover WÜS compactUFH	1 4024 09			
Pre-assembly strip HIU compact	1 4024 49			
Adapter piece for heat meter sensor M 10 x 1 mm	1 4111 60			
Empty weight module	15 kg			
Connection	Male thread ¾" flat sealing			
Nominal pressure	10 bar			
Max. supply temperature WÜS compactUFH	70 °C			
Max. supply temperature WÜS compactUFH TSR	85 °C			
Min. flow pressure MCW	2,8 bar			
Circulation pump space heating	Wilo Para RS 15/6 (SCU) / or similar			
Circulation pump DHW circulation	Wilo Star-Z NOVA / or similar			

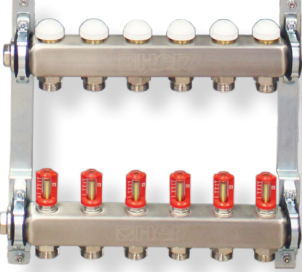
☑ Order data for HIU compactRAD

HIU compactRAD				
Draw off capacity	11 l/min	15 l/min	18 l/min	22 l/min
WÜS compactRAD	1 4021 47	1 4021 48	1 4024 41	1 4021 49
WÜS compactRAD TSR	1 4021 44	1 4021 45	1 4024 46	1 4021 46
WÜS compactRAD TSR insulated	1 4021 50	1 4021 51	1 4024 91	1 4021 52
DHW circulation set	1 4024 73			
Flush cabinet short, 90 mm deep	1 4024 47			
Flush cabinet short, 150 mm deep (in combination with circulation set)	1 4021 63			
Front frame with door short	1 4024 48			
Flush cabinet long, stainless steel distributor connection **, 150 mm deep	1 4021 61			
Front frame with door long	1 4021 62			
Cover WÜS compactRAD	1 4024 09			
Pre-assembly strip WÜS compact	1 4024 49			
Adapter piece for heat meter sensor M 10 x 1 mm	1 4111 60			
Empty weight module	15 kg			
Connection	Male thread ¾" flat sealing			
Nominal pressure	16 bar			
Max. supply temperature WÜS compactRAD	70 °C			
Max. supply temperature WÜS compactRAD TSR	85 °C			
Min. flow pressure MCW	2,8 bar			
Circulation pump space heating	-			
Circulation pump DHW circulation	Wilo Star-Z NOVA / or similar			

MCW - mains cold water, UFH - under floor heating, TSR - with thermostatic control valve, DHW - domestic hot water, NT - radiant heating version, HT - radiator heating version, NTHT - radiant heating version with additional high temperature outlet

** for article number see page 8

☑ Accessories

HERZ stainless steel manifold for HIU compact		Dim.	Order number
 <p>with flow meter (3 l/min.), DN 25, consisting of return manifold with upper thermostatic upper part (M 28 x 1.5), supply Manifold with flow meter inserts. Connection with internal thread G 1", manifold outlets with G 3/4" Eurocone connection. Compression of accessories Adapters (1 6098 xx) must be ordered separately</p>	3x	1 4023 93	
	4x	1 4023 94	
	5x	1 4023 95	
	6x	1 4023 96	
	7x	1 4023 97	
	8x	1 4023 98	
	9x	1 4023 99	
	10x	1 4023 90	

