



Compact Heat Substations

optional with pressure keeping system

- ♥ Used for controlled heat exchange in district heating systems
- ♥ Heat capacity from 20kW
- ♥ Regulation of water quantity
- ♥ Plate heat exchanger - compact brazed or bolted type
- ♥ Individual stations upon request

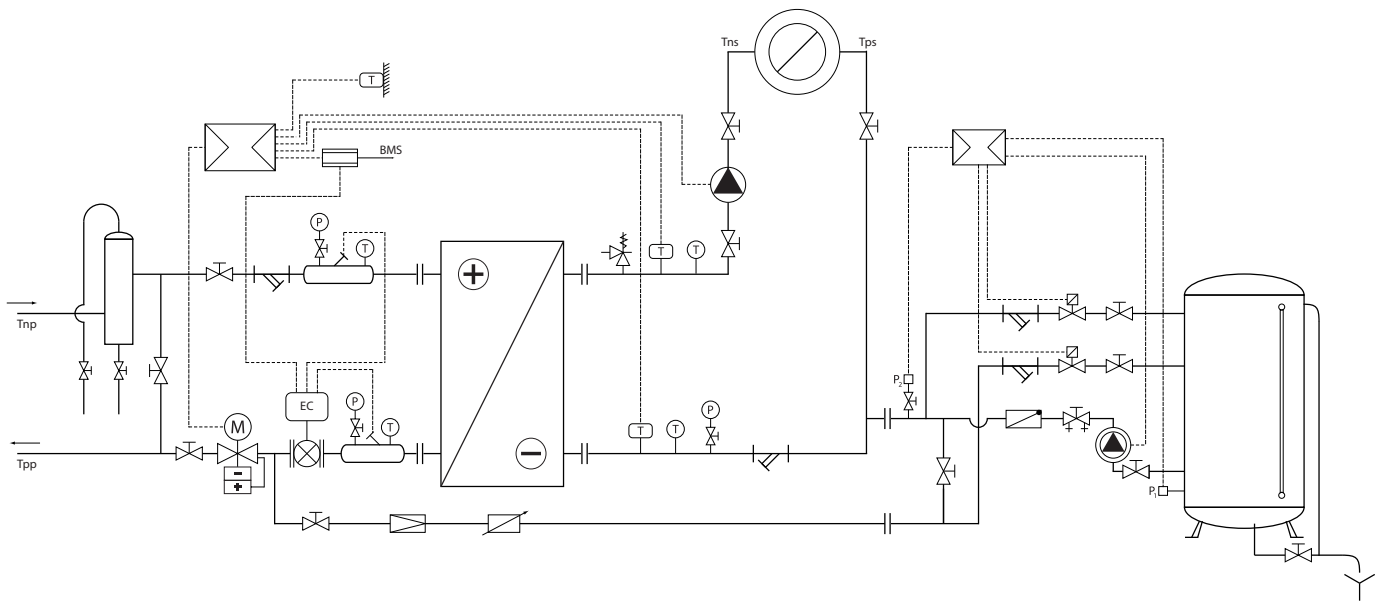


HERZ Armaturen GmbH

A-1230 Vienna · Richard-Strauss-Strasse 22

Tel./Fax: +43 (0)1 616 26 31-0/-227, www.herz.eu





Technical Data

Primary supply temperature	110-140°C / 75-80°C
Secondary supply temperature	90-55°C / 70-45°C
Primary supply nominal pressure	PN 16
Secondary supply nominal pressure	PN 6
Control Valve	Two-way valve with actuator or combi-valve
Heat exchanger	Brazed/bolted type
Pressure keeping systems	Operating pressure in secondary system PN 2 - PN 10

Compact heat substation is used for controlled heat exchange in district heating systems.

The heat exchange is ensured between district heating pipeline system (primary system) and house and building heating pipeline network (secondary system).

Two-way motorized control valve controlled by microprocessor controller or combi-valve provides optimal heat exchanging according to outside temperature. The water quantity can be limited to the specified value programmed with relevant control function.

The plate heat exchanger, designed especially for district heating use, is available as compact brazed type or bolted type.

Compact heat substations are available with heat capacity from 20kW and scalable upon request. They are small, lightweight, with compact construction and easy to install in small and narrow spaces.