

Herz Shield

...and Shield Plus



Thermostatic Mixing Valve Type 2 & Type 3

The **Herz Shield** is suitable for the following applications:
HP-B; HP-S; HP-W; HP-T44; HPT46; LP-BE; LP-SE; LP-WE





The **Herz Shield** range of failsafe thermostatic mixing valves have been designed and manufactured to meet the requirements of BS 7942:2000 and the National Health Service model engineering specification D08 for use in healthcare premises, hospitals, care homes, and schools.

The valve has been independently tested and approved as a type 3 valve under the TMV3 scheme.

The valve also meets the requirements of BS EN 1111: 2017 and BS EN 1287: 2017 and the TMV2 Type Scheme. The valves have been independently tested and approved as a type 2 valve under the TMV2 scheme by NSF.

Herz Shield TMV2 thermostatic mixing valves are suitable for use in domestic housing and commercial buildings for single user outlets including wash basins, showers, baths and bidets but are also suitable for multiple outlet use.

The valve is available as 15mm or 22mm with compression connections as standard and comes with flat faced union couplings, strainers and integral, removable check valves. There is also a version with angled isolation valves incorporating strainers.

Adjustment

Remove the cap then remove the temperature locking ring from the spindle using a suitably sized spanner. Open the outlet and establish a stable flow and temperature and using a suitably sized spanner, turn clockwise to decrease temperature and anti-clockwise to increase temperature. Allow the mixed water to flow for a minute prior to final setting. Once the desired temperature is reached – replace the temperature locking ring on the spindle and refit the cap on the valve.

Technical Specification

TMV3 Approved Parameters	
Minimum mixed temperature	30°C
Maximum mixed temperature	50°C
Maximum temperature deviation	+2°C
Maximum hot inlet temperature	85°C
Hot inlet temperature range	52°C to 65°C
Cold inlet temperature range	5°C to 20°C
Minimum temperature differential (mixed to hot) for fail safe	10°C
Maximum static pressure	10 bar
Minimum dynamic flow pressure	0.2 bar
Maximum inlet pressure ratio	5:1
D08 working pressure range	0.2 to 1.0 bar (LP) 1.0 to 5.0 bar (HP)
Maximum flow rate @ 1 bar differential	Ø15mm 25 l/min Ø22mm 28.3 l/min

Valves operating outside these conditions cannot be guaranteed by the Scheme to operate as Type 3 valves.

TMV2 Approved Parameters		
	High Pressure BS EN 1111	Low Pressure BS EN 1287
Maximum static pressure	10 bar	10 bar
Flow pressure, hot & cold	0.5 to 5 bar	0.1 to 1.0 bar
Hot inlet temperature range	55°C to 65°C	55°C to 65°C
Cold inlet temperature range	≤25°C	≤25°C
Maximum temperature deviation	+2°C	+2°C
Minimum temperature differential (mixed to hot) for fail safe	10°C	10°C
Maximum inlet pressure differential	5:1	5:1

Valves operating outside these conditions cannot be guaranteed by the Scheme to operate as Type 2 valves.

Valves must be installed and commissioned in line with the installation and maintenance instructions.

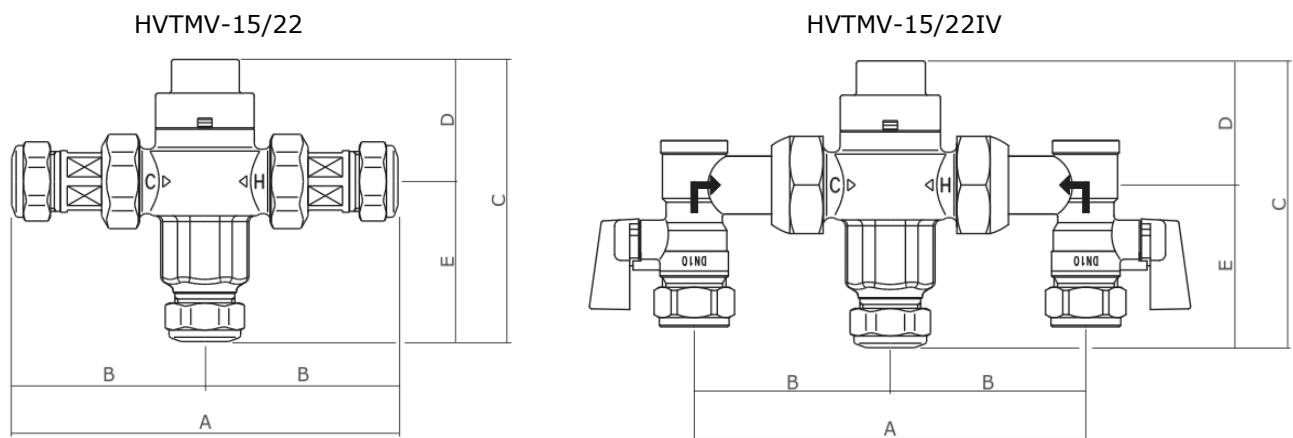
Designation Codes

Code	Operating Pressure Range	Application	NHS Recommended Pre-set Mixed Water Temperature
HP-B	High Pressure	Bidet	38
HP-S	High Pressure	Shower	41
HP-W	High Pressure	Washbasin	41
HP-T44	High Pressure	Bath (44 °C assisted fill)	44
HP-T46	High Pressure	Bath (46 °C assisted fill)	46
LP-BE	Low Pressure	Bidet	38
LP-SE	Low Pressure	Shower	41
LP-WE	Low Pressure	Washbasin	41

The **Herz Shield** is suitable for the following applications:

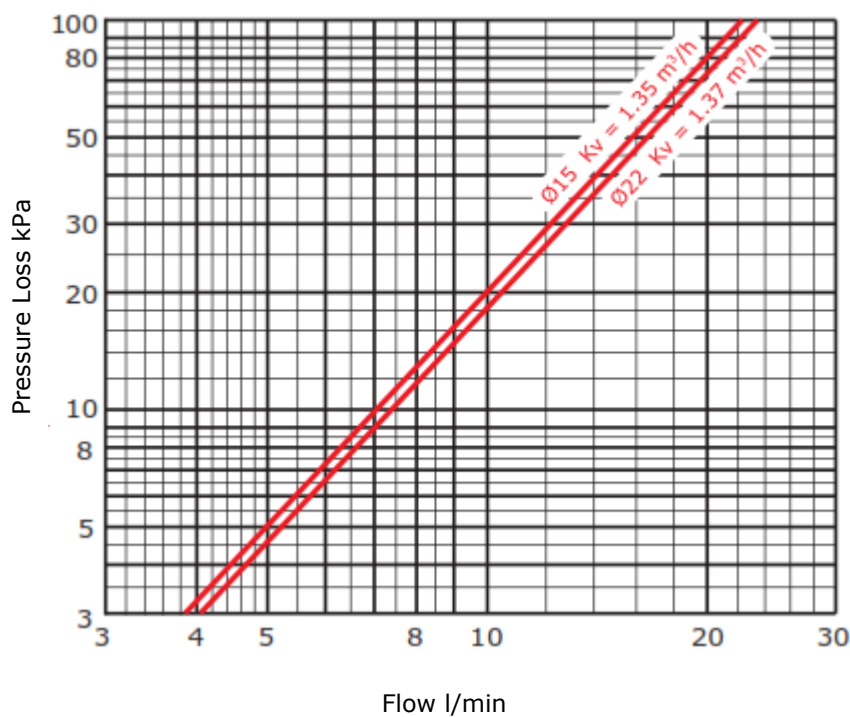
HP-B; HP-S; HP-W; HP-T44; HPT46; LP-BE; LP-SE; LP-WE

Dimensions

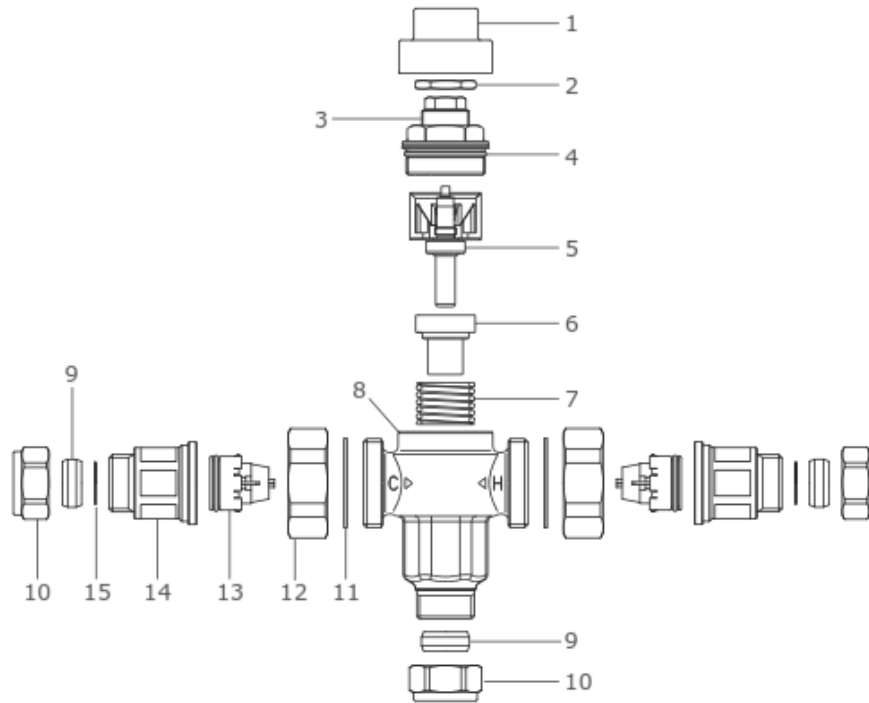


Herz Code	A (mm)	B (mm)	C (mm)	D (mm)	E (mm)	kg
HVTMV-15	141	67.5	99	43	56	0.5
HVTMV-22	150	75	100	43	57	0.6
HVTMV-15IV	120	60	99	43	56	0.65
HVTMV-22IV	136	68	100	43	57	0.75

Flowrates



Components



Item	Component	Item	Component
1	Cap	9	Olive
2	Temperature Locking Ring	10	Compression Nut
3	Valve Head Assembly	11	Gasket
4	Head Assembly O Ring	12	Union Nut
5	Thermostatic Element	13	Check Valve Cartridge
6	Flow Conveyor	14	Inlet Tail Housing
7	Spring	15	Inlet Tail Filter
8	Valve Body		

Spares

Herz Code	Component
HVTMVSPARE01	15mm TMV Internal service kit
HVTMVSPARE02	22mm TMV Internal service kit
HVTMVSPARE03	15mm TMV Tail piece kit
HVTMVSPARE04	22mm TMV Tail piece kit
HVTMVSPARE05	15mm TMV Angled IV kit
HVTMVSPARE06	22mm TMV Angled IV kit

Herz Valves UK Ltd

Unit 2B
 Centurion Business Park,
 Sturrock Way,
 Bretton,
 Peterborough
 PE3 8YF
 Tel: 01733 330300
 E-Mail: sales@herzvalves.com
 Web: www.herzvalves.com

