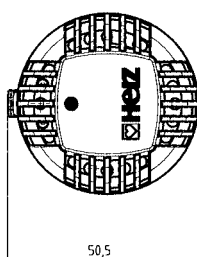
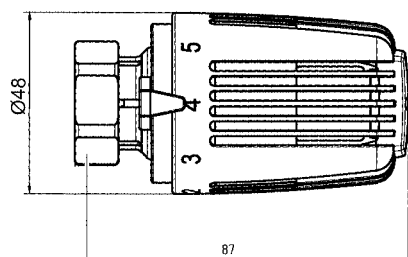


7230



7260

HERZ-thermostatic head

7230

7260



011

EN 215

tested and registered

certificated products

1 7230 06

1 7260 06

1 7230 06 Radiator thermostat with hydrosensor (liquid filled)
With "0" position, adjustable frost protection, limitation and locking of set value range. White hand wheel.

1 7260 06 Radiator thermostat with hydrosensor (liquid filled)
With automatic frost protection and limitation and locking of set value range. White hand wheel.

Models

7230

7260

Set value range **7230:** 0-28°C

7260: 6-28°C

Frost protection 6°C

The HERZ-thermostat is maintenance-free.

Operational data

Can be combined with any HERZ-valve suitable for thermostatic operation.

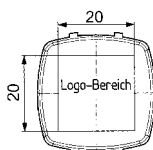
Further information on article numbers, dimensions and delivery type can be found in the appropriate data sheets.

Application

The HERZ-thermostat serves as probe and control element. The valve spindle is moved when the volume of the liquid filling of the HERZ-hydrosensor changes.

Operation

Attachable logo clip



Logo clip

On request, we can deliver the logo clip including your company's logo.

We reserve the right to make modifications in line with advances in engineering.

By adjusting the scale marking to the indicator the following approximate temperatures can be reached in the room, allowing temperature (K) deviations according to the installation and system type.

Marking	*	1	2	3	4	5	6
°C	6	9,5	13	16,5	20	23,5	28

Setting options

7230/7260

The "4" comfort setting corresponds to a room temperature of approximately 20°C and offers optimum comfort and energy saving.

Comfort setting "4"

Set to "*" position the valve opens at an ambient temperature of approximately 6°C and prevents the system from freezing.

Frost protection "*"

Set to position "0", the thermostatic valve is shut off and the frost protection is overridden.

Shutoff Thermostat 7230

When the heating period ends, open the thermostat by turning anti-clockwise. This prevents dirt adhering on the valve seat.

Summer setting

For theft protection, snap clips 1 9552 03 can be ordered, which can be fastened over the union nut.

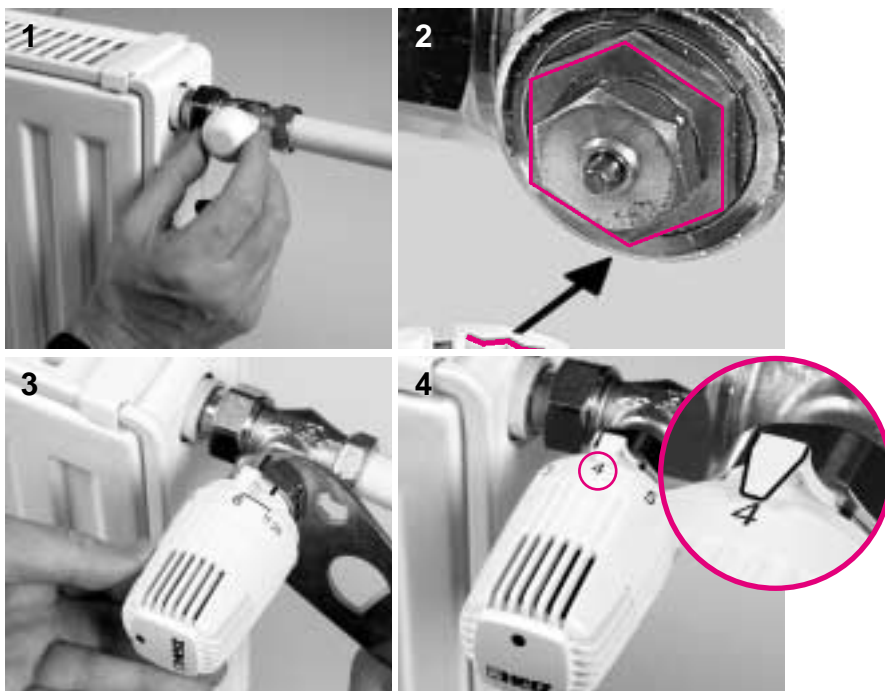
Theft protection

- 1 6640 00 HERZ-universal key to open theft protection
- 1 6807 90 HERZ-TS-90 assembly key
- 1 9551 00 stop pins for limitation and locking of the set value range
- 1 9552 03 theft protection (snap clips), open with key 1 6640 00
- 1 7000 00 Logo clip, unmarked

Accessories

1. Unscrew the screw cap or hand wheel from the valve.
2. Set the thermostatic head to the "fully open" position (preset) and place it on the lower part of the valve until the lower part locks and the indicator is completely visible.
3. Nip up the union nut and tighten gently (key 30 hex).
4. Turn the hand wheel to check operation.

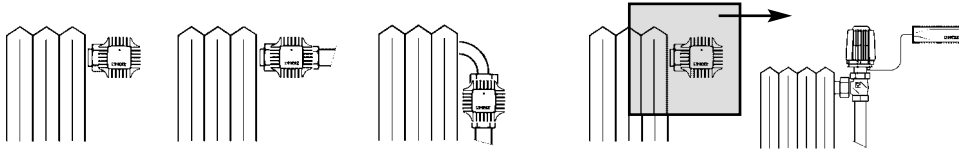
Installation



The HERZ-thermostatic head should not be subjected to direct sunlight or heat radiating devices (e.g. TV). The thermostatic heads can only sense and adjust correctly if the air ways to the integrated sensor are clear and not affected by anything covering the thermostatic head or the whole radiator e.g. if the radiator is covered by panelling or heavy curtains, heat will accumulate and the thermostat is therefore unable to sense and adjust to the room temperature. In this case use HERZ-thermostat with remote sensor or remote setting.

- 7330** HERZ-thermostat with remote adjustment
- 7430** HERZ-thermostat with remote sensor and "0" position
- 7460** HERZ-thermostat with remote sensor and automatic frost protection

The appropriate standard sheets provide further technical information about these three products.



Assembly instructions

Hidden limitation or locking

To prevent unauthorized limitation or locking of the turning range, install one or two plug-in type stop pins.

The stop pins can be ordered as accessories, article number **1 9551 00 - 1 set**.

Procedure

The lower part of the thermostatic head has a base part with circular holes to house the stop pins.

- Set the thermostatic head to the required limiting, or locking position.
- Between the hand wheel scale positions "6" and "6" is a line that shows the marking for setting the stop pins. It is advisable to follow the same procedure as for "limitation".
- Set hand wheel to required set value (picture 1)
- Upward limitation
Place pin in alignment to the left-hand end of the line. (picture 2)
- Downward limitation
Place pin in alignment to the right end of the line. (picture 3)
- Locking
Place a pin at the left and right ends of the line. (picture 4)
- Plug in the stop pins until the stop (thick end). They can be removed with an appropriate tool (pliers etc).



Picture 1



Picture 2



Picture 3



Picture 4