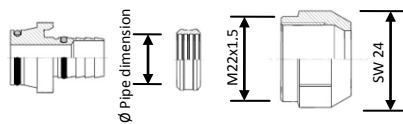


# HERZ- Compression unions for PE-X, PB- and aluminium composite pipes

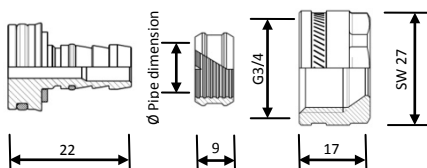
Data sheet for **6066 - 6198**, Issue 0420



## **6066** M22x1,5mm - 14, 16 and 17mm

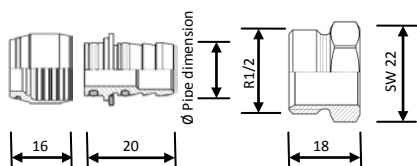
Plastic pipe connection M22x1,5

For PE-x, PB and aluminium composite pipes, consisting of spigot, olive and union M22x1,5



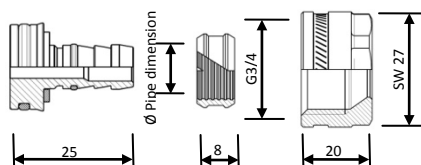
## **6092** G1/2 - 12 and 16mm

Plastic pipe connection G ½, with double O- Ring and isolating Disc, consisting of spigot, olive and union nut G 1/2 with cone



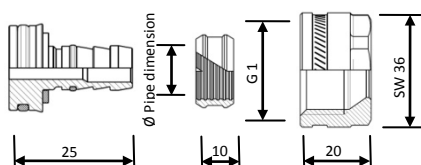
## 1 **6092 01** G1/2 - 16mm

Compression adapter for plastic pipe connections, consisting of compression union nut and olive, compression adapter R ½, suitable for valves series D, TS-7728, DELUXE and RL-5.



## **6098** G3/4 - 10, 14, 15, 16, 17, 18 and 20mm

Plastic pipe connection G ¾, for PE-X, PB and aluminium composite pipe, consisting of spigot, olive and union nut G ¾ with cone.



## **6198** G 1 - 16, 20, 25 and 26mm

Plastic pipe connection G 1, for PE-X, PB and aluminium composite pipe, consisting of spigot, olive and union nut G 1 with cone.

**Materials, Order numbers**

| Order number | Pipe Ø outside [mm] | Nut     | Material Nut | Material Olive | Material Spigot |
|--------------|---------------------|---------|--------------|----------------|-----------------|
| 1 6066 02    | 14x2                | M22x1,5 | CW617N       | CW617N         | CW617N          |
| 1 6066 03    | 16x2                |         |              |                |                 |
| 1 6066 04    | 17x2                |         |              |                |                 |
| 1 6092 01    | 16x2                | R 1/2   | CW617N       | CW617N         | CW617N          |
| 1 6092 11    | 12x2                | G 1/2   | CW617N       | CW617N         | CW617N          |
| 1 6092 13    | 16x2                |         |              |                |                 |
| 1 6098 18    | 10x1,3              | G 3/4   | CW617N       | CW617N         | CW617N          |
| 1 6098 02    | 14x2                |         |              |                |                 |
| 1 6098 16    | 15x2,5              |         |              |                |                 |
| 1 6098 03    | 16x2                |         |              |                |                 |
| 1 6098 13    | 16x2,25             |         |              |                |                 |
| 1 6098 04    | 17x2                |         |              |                |                 |
| 1 6098 05    | 17x2,5              |         |              |                |                 |
| 1 6098 07    | 18x2                |         |              |                |                 |
| 1 6098 06    | 18x2,5              |         |              |                |                 |
| 1 6098 17    | 18x3                |         |              |                |                 |
| 1 6098 08    | 20x2                |         |              |                |                 |
| 1 6098 20    | 20x2,25             |         |              |                |                 |
| 1 6098 10    | 20x3,5              |         |              |                |                 |
| 1 6098 11    | 20x2,5              |         |              |                |                 |
| 1 6098 09    | 20x2,8              |         |              |                |                 |
| 1 6098 19    | 20x3,4              |         |              |                |                 |
| 1 6198 11    | 16x2                | G 1     | CW617N       | CW617N         | CW617N          |
| 1 6198 12    | 20x2                |         |              |                |                 |
| 1 6198 00    | 25x3,5              |         |              |                |                 |
| 1 6198 01    | 26x3                |         |              |                |                 |

O- Rings made of EPDM

**Technical data**

Max. working temperature: 95°C

Max. working pressure: 10 bar

Heating water purity according to ÖNORM H 5195 and/or VDI- guideline 2035.

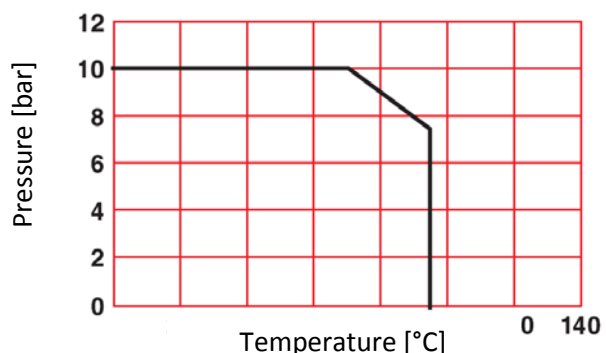
The use of ethylene, or propylene glycol in a mixing ratio 25- 50% is allowed.

The used cone of the compression union is according DIN 3838 (Eurocone).

The information provided by the pipe manufacturer must be observed.

The pipes used must according to the respective ISO, EN, DIN or ÖNORM be manufactured and tested by a testing laboratory and constantly monitored.

**Connection, pressure-temperature plastic pipe connectors**



**Application**

The plastic pipe connections are suitable for heating installation of class 1, 2, 4 and 5, according ISO 10508, for pipes made of PE-X (EN ISO 15875) and PE-RT (EN ISO 22391), and for plastic metal composite pipes (EN ISO 21003).

The specifications of the pipe manufacturer regarding pressure and temperature must be observed.

The plastic pipe connection represents a completely safe connection between the pipe and the valve body. This connection can be released at any time if required. Proper tightness is permanently only given if the assembly was performed correctly by HERZ assembly instructions.

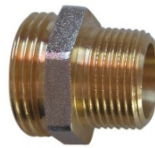
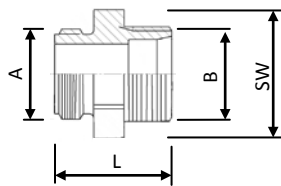
**☑ Installation**

**In no event thread sealant (e.g. PTFE bend, fluids) may be used !  
Calibration tools see other place in the document.**

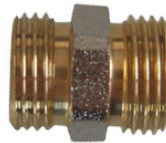
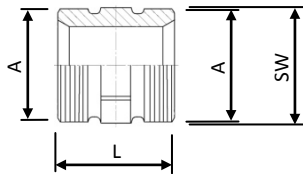
|                                   |              |                                       |             |                                  |             |                          |  |
|-----------------------------------|--------------|---------------------------------------|-------------|----------------------------------|-------------|--------------------------|--|
| <p><b>6098 G 3/4</b></p>          |              | <p><b>6092 G 1/2<br/>6198 G 1</b></p> |             | <p><b>6066 M 22 x 1,5 mm</b></p> |             | <p><b>6092 R 1/2</b></p> |  |
| <p><b>1</b></p> <p>min. 45 mm</p> |              | <p><b>2</b></p>                       |             |                                  |             |                          |  |
| <p><b>3</b></p>                   |              |                                       |             | <p><b>4</b></p>                  |             |                          |  |
| <p><b>5</b></p>                   |              |                                       |             | <p><b>6</b></p> <p>(*)</p>       |             |                          |  |
| <p>(*)</p>                        |              | <p>(*)</p>                            |             | <p>(*)</p>                       |             | <p>(*)</p>               |  |
| <b>6066</b>                       | <b>1 1/4</b> | <b>450°</b>                           | <b>6098</b> | <b>1</b>                         | <b>360°</b> |                          |  |
| <b>6092</b>                       | <b>1 1/4</b> | <b>450°</b>                           | <b>6198</b> | <b>1</b>                         | <b>360°</b> |                          |  |

## Accessories

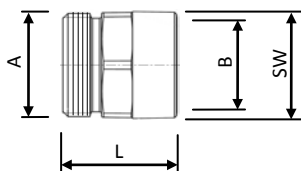
## HERZ- Adapters



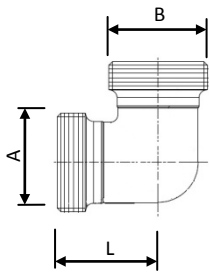
| Order number | A                      | B                      | L    | SW | Material                 |
|--------------|------------------------|------------------------|------|----|--------------------------|
| 1 6272 01    | G 1/2                  | M22x1,5                | 27   | 27 | CW725R,<br>nickel plated |
| 1 6266 01    | G 1/2, ISO 228         | G 3/4 Cone,<br>ISO 228 | 24   | 27 | CW725R,<br>nickel plated |
| 1 6266 11    | G 1/2 Cone,<br>ISO 228 | R 1/2, ISO 7/1         | 31   | 22 |                          |
| 1 6266 12    | G 3/4 Cone,<br>ISO 228 | R 1/2, ISO 7/1         | 42   | 27 |                          |
| 1 6266 20    | G 3/4 Cone,<br>ISO 228 | R 3/4, ISO 7/1         | 33,7 | 27 |                          |
| 1 6266 13    | G 1 Cone,<br>ISO 228   | R 3/4, ISO 7/1         | 33,5 | 34 |                          |
| 1 6266 03    | G 1 Cone,<br>ISO 228   | R 1, ISO 7/1           | 38,5 | 34 |                          |



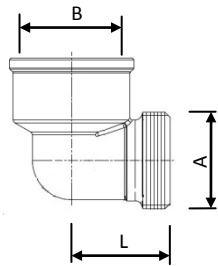
| Order number | A                  | L  | SW | Material              |
|--------------|--------------------|----|----|-----------------------|
| 1 6262 01    | G 1/2, ISO 228     | 26 | 22 | CW725R, nickel plated |
| 1 6262 02    | G 3/4, ISO 228     | 27 | 27 | CW725R                |
| 1 6262 03    | G 1, ISO 228       | 29 | 34 | CW725R, nickel plated |
| 1 6262 04    | G 1xG 3/4, ISO 228 | 25 | 38 | CW725R, nickel plated |
| 1 6262 12    | G 3/4, ISO 228     | 27 | 27 | CW725R, nickel plated |



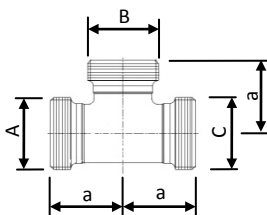
| Order number | A                      | B               | L    | SW | Material                 |
|--------------|------------------------|-----------------|------|----|--------------------------|
| 1 6265 01    | G 3/4 Cone,<br>ISO 228 | Rp 1/2, ISO 7/1 | 29,5 | 27 | CW725R,<br>nickel plated |
| 1 6265 11    | G 1/2 Cone,<br>ISO 228 | Rp 1/2, ISO 7/1 | 28   | 27 |                          |
| 1 6265 12    | G 3/4 Cone,<br>ISO 228 | G 3/4, ISO 228  | 29   | 32 |                          |
| 1 6265 13    | G 1 Cone,<br>ISO 228   | Rp 3/4, ISO 7/1 | 26,5 | 34 |                          |
| 1 6265 14    | G 1 Cone,<br>ISO 228   | Rp 1, ISO 7/1   | 32,5 | 37 |                          |
| 1 6275 22    | M22x1,5 Cone           | Rp 1/2, ISO 7/1 | 28   | 27 | CW725R,<br>nickel plated |



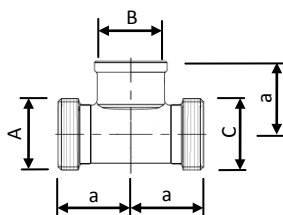
| Order number | A                   | B                   | L    | Material              |
|--------------|---------------------|---------------------|------|-----------------------|
| P 3124 18    | G 1/2 Cone, ISO 228 | G 1/2 Cone, ISO 228 | 23,5 | CW626N, nickel plated |
| P 3126 03    | G 3/4 Cone, ISO 228 | G 3/4 Cone, ISO 228 | 27   |                       |
| P 3128 09    | G 1 Cone, ISO 228   | G 1 Cone, ISO 228   | 32   |                       |
| P 3124 17    | G 1/2 Cone, ISO 228 | R 1/2, ISO 7/1      | 23,5 |                       |
| P 3126 02    | G 3/4 Cone, ISO 228 | R 1/2, ISO 7/1      | 27   |                       |
| P 3126 06    | G 3/4 Cone, ISO 228 | R 3/4, ISO 7/1      | 27   |                       |
| P 3128 07    | G 1 Cone, ISO 228   | R 3/4, ISO 7/1      | 31   |                       |
| P 3128 08    | G 1 Cone, ISO 228   | R 1, ISO 7/1        | 31   |                       |



| Order number | A                   | B               | L    | Material              |
|--------------|---------------------|-----------------|------|-----------------------|
| P 3124 16    | G 1/2 Cone, ISO 228 | Rp 1/2, ISO 7/1 | 25,5 | CW626N, nickel plated |
| P 3126 16    | G 3/4 Cone, ISO 228 | Rp 1/2, ISO 7/1 | 27   |                       |
| P 3126 05    | G 3/4 Cone, ISO 228 | Rp 3/4, ISO 7/1 | 27   |                       |
| P 3128 05    | G 1 Cone, ISO 228   | Rp 3/4, ISO 7/1 | 31   |                       |
| P 3128 06    | G Cone, ISO 228     | Rp 1, ISO 7/1   | 31   |                       |



| Order number | A                   | B                   | C                   | a    | Material              |
|--------------|---------------------|---------------------|---------------------|------|-----------------------|
| P 3124 19    | G 1/2 Cone, ISO 228 | G 1/2 Cone, ISO 228 | G 1/2 Cone, ISO 228 | 23,5 | CW626N, nickel plated |
| P 3126 08    | G 3/4 Cone, ISO 228 | G 3/4 Cone, ISO 228 | G 3/4 Cone, ISO 228 | 27   |                       |
| P 3128 15    | G 1 Cone, ISO 228   | G 1 Cone, ISO 228   | G 1 Cone, ISO 228   | 31   |                       |
| P 3124 20    | G 1/2 Cone, ISO 228 | R 1/2, ISO 7/1      | G 1/2 Cone, ISO 228 | 23,5 |                       |
| P 3126 17    | G 3/4 Cone, ISO 228 | R 3/4, ISO 7/1      | G 3/4 Cone, ISO 228 | 27   |                       |
| P 3128 16    | G 1 Cone, ISO 228   | R 3/4, ISO 7/1      | G 1 Cone, ISO 228   | 31   |                       |
| P 3128 17    | G 1 Cone, ISO 228   | R 1, ISO 7/1        | G 1 Cone, ISO 228   | 31   |                       |



| Order number | A                   | B               | C                   | a    | Material              |
|--------------|---------------------|-----------------|---------------------|------|-----------------------|
| P 3124 15    | G 1/2 Cone, ISO 228 | Rp 1/2, ISO 7/1 | G 1/2 Cone, ISO 228 | 23,5 | CW626N, nickel plated |
| P 3126 07    | G 3/4 Cone, ISO 228 | Rp 1/2, ISO 7/1 | G 3/4 Cone, ISO 228 | 27   |                       |
| P 3126 13    | G 3/4 Cone, ISO 228 | Rp 3/4, ISO 7/1 | G 3/4 Cone, ISO 228 | 27   |                       |
| P 3128 01    | G 1 Cone, ISO 228   | Rp 1/2, ISO 7/1 | G 1 Cone, ISO 228   | 31   |                       |
| P 3128 03    | G 1 Cone, ISO 228   | Rp 3/4, ISO 7/1 | G 1 Cone, ISO 228   | 31   |                       |
| P 3128 04    | G 1 Cone, ISO 228   | Rp 1, ISO 7/1   | G 1 Cone, ISO 228   | 31   |                       |

### ☑ Pipes and calibration tools

HERZ- Pipe for universal use, with Aluminium wall thickness 0.25 – 0.8mm, or for underfloor heating systems with Aluminium wall thickness 0.2mm.

| Pipe $\varnothing$ x Wall thickness mm | Aluminium wall thickness mm | PE-RT/Al/PE-RT, Pipe coil | PE-RT/Al/PE-RT, Pipe rail |
|----------------------------------------|-----------------------------|---------------------------|---------------------------|
| 10x1,3                                 | 0,2                         | 3 C101 30                 | -                         |
| 16x2                                   | 0,4                         | 3 C160 20                 | 3 C160 34                 |
| 16x2                                   | 0,2                         | 3 D160 20                 | 3 C160 46-                |
| 20x2                                   | 0,4                         | 3 C200 20                 | 3 C200 34                 |
| 20x2                                   | 0,25                        | 3 C200 30                 | 3 C200 38-                |
| 26x3                                   | 0,5                         | 3 C260 30                 | 3 C260 35                 |
| 26x3                                   | 0,35                        | 3 C260 40                 | 3 C260 39                 |
| 32x3                                   | 0,5                         | 3 C320 30                 | 3 C320 35                 |
| 40x3,5                                 | 0,5                         | 3 C400 30                 | 3 C400 36                 |
| 50x4,5                                 | 0,6                         | -                         | 3 C500 40                 |
| 63x4,5                                 | 0,8                         | -                         | 3 C630 45                 |
| 75x5                                   | 0,8                         | -                         | 3 C750 50                 |

Information about other versions, insulated pipes or pipe in pipe, please contact your next HERZ branch office.

Calibration tools for HERZ- pipe, with lever, or using with cordless screwdriver.

| Pipe $\varnothing$ | Calibration tool with lever | Calibration tool for cordless screwdriver | Pipe $\varnothing$ | Calibration tool with lever | Calibration tool for cordless screwdriver |
|--------------------|-----------------------------|-------------------------------------------|--------------------|-----------------------------|-------------------------------------------|
| 10x1,3             | 3 F010 11                   | -                                         | 40x3,5             | P 2011 80                   | P 2010 80                                 |
| 16x2               | P 2011 74                   | P 2010 74                                 | 50x4               | P 2011 83                   | P 2010 83                                 |
| 20x2               | P 2011 76                   | P 2010 76                                 | 63x4,5             | P 2011 87                   | P 2010 87                                 |
| 26x3               | P 2011 78                   | P 2010 78                                 | 75x5               | P 2010 91                   | -                                         |
| 32x3               | P 2011 79                   | P 2010 79                                 |                    |                             |                                           |

**Material**

Pursuant to Article 33 of the REACH Regulation (EC No. 1907/2006), we are obliged to point out that the material lead is listed on the SVHC list and that all brass components manufactured in our products exceed 0.1% (w/w) lead (CAS: 7439-92-1 / EINECS: 231-100-4). Since lead is a component part of an alloy, actual exposure is not expected and therefore no additional information on safe use is necessary.

**Disposal**

Disposal must comply with local and current legislation.

All specifications and information within this document are reflecting the information available at the time of going to print and meant for informational purpose only. Herz Armaturen reserves the right to modify and change products as well as its technical specifications and/or its function according to technological progress and requirements. All diagrams are indicative in nature and do not to be complete. It is understood that all images of Herz products are symbolic representations and therefore may visually differ from the actual product. Colours may differ due to printing technology used. In case of any further questions don't hesitate to contact your closest HERZ Branch-Office.